

Activity ID	Activity Name	OD	TF	Start	Finish	Calendar	2011	2012	2013	2014	2015	2016	2017	2018
Interim Agreement		219	0	Jul-01-2010 A	Dec-31-2011	SKW-7DAY (MTT2)								
Milestones		219	0	Jul-01-2010 A	Dec-31-2011	SKW-7DAY (MTT2)								
IA Phase 2		219	0	Jul-01-2010 A	Dec-31-2011	SKW-7DAY (MTT2)								
MILE-IAP2	Commencement Date - IA Phase 2	0		Jul-01-2010 A		SKW-7DAY (MTT2)								
MILE-IAP2-CC	Commercial Close - IA Phase 2	0	92	Sep-30-2011		SKW-7DAY (MTT2)								
MILE-IAP2-FC	Financial Close - IA Phase 2	0	0	Dec-31-2011*		SKW-7DAY (MTT2)								
Notice To Proceed		1291	5	Sep-30-2011	Sep-12-2016									
Milestones		1224	5	Jan-03-2012	Sep-12-2016									
Limited Notice to Proceed		1	3	Jan-03-2012	Jan-03-2012	SKW-5DINT (MTT2)								
MILE-LNTP	LNTP	1	3	Jan-03-2012	Jan-03-2012	SKW-5DINT (MTT2)								
Precedent Conditions & Notice to Proceed		979	5	Dec-11-2012	Sep-12-2016									
MILE-NTP-MTT2	NTP - New Midtown Tunnel	0	42	Dec-11-2012		SKW-7DAY (MTT2)								
MILE-MLK-ES	MLK Early Start - DB Contractor Option	0	0	Feb-17-2013*		SKW-7DAY (MLK)								
MILE-NTP-DTT	NTP - Existing DTT Rehab	0	9	Jul-18-2013		SKW-7DAY (DTT)								
MILE-NTP-MLK	NTP - MLK Expressway Extension	0	0	Jan-18-2014*		SKW-7DAY (MLK)								
MILE-NTP-MTT1	NTP - Existing MTT Rehab	0	5	Sep-12-2016		SKW-7DAY (MTT1)								
Precedent Conditions for NTP		469	386	Sep-30-2011	Jul-17-2013									
Precedent Conditions & Notice to Proceed		469	386	Sep-30-2011	Jul-17-2013									
Tolling and O&M Services NTP		469	7	Sep-30-2011	Jul-17-2013									
DMM-NTP-005	Operations & Maintenance NTP Preparation Period	390	7	Jan-04-2012	Jul-17-2013	SKW-5DOU (MTT2)								
Project Development Plans		83	393	Sep-30-2011	Jan-24-2012									
Operations & Maintenance Plan (O&M Plan)		83	393	Sep-30-2011	Jan-24-2012									
SUBM-PDP-A11.0	Operations & Maintenance Plan (O&M Plan) - by ERC	20	350	Sep-30-2011	Oct-27-2011	SKW-5DINT (MTT2)								
SUBM-PDP-A11.1	Submit Operations & Maintenance Plan (O&M Plan)	1	307	Jan-03-2012	Jan-03-2012	SKW-5DINT (MTT2)								
SUBM-PDP-A11.999	Operations & Maintenance Plan Submittal Requirement (TR Attachment 3A) [90 days prior to Service Commencement]	0	307		Jan-03-2012	SKW-5DINT (MTT2)								
SUBM-PDP-A11.2	Operations & Maintenance Plan (O&M Plan) - VDOT Review & Approval	21	549	Jan-04-2012	Jan-24-2012	SKW-7DAY (MTT2)								
Life Cycle Maintenance Plan		83	393	Sep-30-2011	Jan-24-2012									
SUBM-PDP-A12.0	Life Cycle Maintenance Plan - by ERC	20	350	Sep-30-2011	Oct-27-2011	SKW-5DINT (MTT2)								
SUBM-PDP-A12.1	Submit Life Cycle Maintenance Plan	1	307	Jan-03-2012	Jan-03-2012	SKW-5DINT (MTT2)								
SUBM-PDP-A12.999	Life Cycle Maintenance Plan Submittal Requirement (TR Attachment 3A) [90 days prior to Service Commencement]	0	307		Jan-03-2012	SKW-5DINT (MTT2)								
SUBM-PDP-A12.2	Life Cycle Maintenance Plan - VDOT Review & Approval	21	549	Jan-04-2012	Jan-24-2012	SKW-7DAY (MTT2)								
Design NTP		48	23	Sep-30-2011	Dec-07-2011									
MILE-PREC-DNTP	Precedent Conditions Met for Design NTP	0	22		Dec-02-2011	SKW-5DINT (MTT2)								
SUBM-NTP-DGN.0	Submit Request for Design NTP	1	22	Dec-05-2011	Dec-05-2011	SKW-5DINT (MTT2)								
SUBM-NTP-DGN.1	Design NTP Request - VDOT Review & Approval	1	33	Dec-06-2011	Dec-06-2011	SKW-7DAY (MTT2)								
MILE-DNTP	Design NTP	0	33	Dec-07-2011		SKW-7DAY (MTT2)								
Project Development Plans		46	24	Sep-30-2011	Dec-02-2011									
Concessionaire Management Plan (CMP)		36	34	Sep-30-2011	Nov-18-2011									
SUBM-PDP-A1.0	Concessionaire Management Plan (CMP) - by ERC	20	32	Sep-30-2011	Oct-27-2011	SKW-5DINT (MTT2)								
SUBM-PDP-A1.1	Submit Concessionaire Management Plan (CMP)	1	32	Oct-28-2011	Oct-28-2011	SKW-5DINT (MTT2)								
SUBM-PDP-A1.2	Concessionaire Management Plan (CMP) - VDOT Review & Approval	21	48	Oct-29-2011	Nov-18-2011	SKW-7DAY (MTT2)								
Document Management Plan		46	24	Sep-30-2011	Dec-02-2011									
SUBM-PDP-A2.0a	Document Management Plan (DMP) - by SKW	20	22	Sep-30-2011	Oct-27-2011	SKW-5DINT (MTT2)								
SUBM-PDP-A2.0b	Document Management Plan (DMP) - by ERC	10	22	Oct-28-2011	Nov-10-2011	SKW-5DINT (MTT2)								
SUBM-PDP-A2.1	Submit Document Management Plan (DMP)	1	22	Nov-11-2011	Nov-11-2011	SKW-5DINT (MTT2)								
SUBM-PDP-A2.2	Document Management Plan (DMP) - VDOT Review & Approval	21	34	Nov-12-2011	Dec-02-2011	SKW-7DAY (MTT2)								
Design Quality Management Plan (DQMP)		36	34	Sep-30-2011	Nov-18-2011									

All Activities
Data Date: Sep-30-2011

SKW Constructors
295 Bendix Road, Suite 400
Virginia Beach, VA 23456

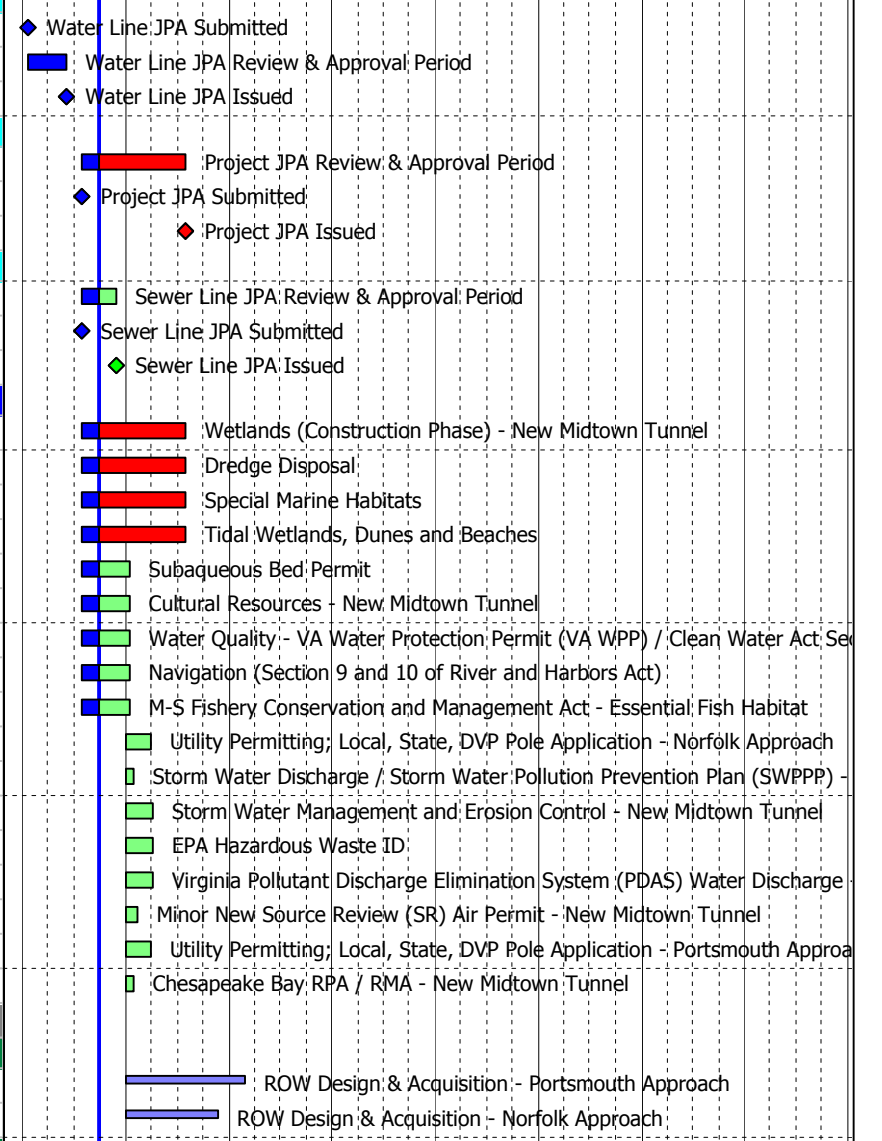


- Summary Bar ◆
- Actual Bar ◆
- Current Bar ◆
- Critical Bar ◆
- ◆ Actual Milestone
- ◆ Current Milestone
- ◆ Critical Milestone

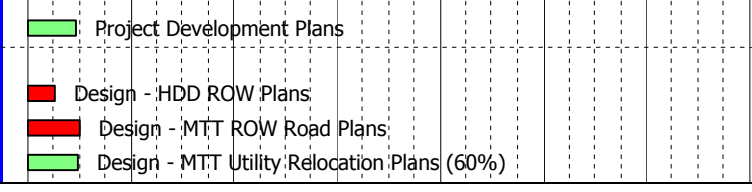
Initial Baseline Schedule Revisions			
Date	Revision	Checked	Appro...
Jun-29-2011	0 - Initial Baseline Schedule		
Oct-21-2011	1 - FC=12/31/11, Richmond Changes, MLK		
Nov-28-2011	2 - Response to VDOT Comments		

Activity ID	Activity Name	OD	TF	Start	Finish	Calendar	2011	2012	2013	2014	2015	2016	2017	2018
Punchlist		480	0	Mar-26-2016	Jan-27-2018									
New Midtown Tunnel		30	5	Aug-13-2016	Sep-11-2016	SKW-7DAY (MTT2)								
MTT2-PL-555	Punchlist - New Midtown Tunnel	30	5	Aug-13-2016	Sep-11-2016	SKW-7DAY (MTT2)								■ Punchlist - New Midtown
MLK Expressway Extension		21	0	Aug-12-2016	Sep-10-2016									
MLK-PL-555	Punchlist - MLK Expressway Extension	30	0	Aug-12-2016	Sep-10-2016	SKW-7DAY (MLK)								■ Punchlist - MLK Express
TOLL-PL-555	Punchlist - Tolling System (Phase 2)	5	15	Aug-12-2016	Aug-18-2016	SKW-5DOUT (MLK)								■ Punchlist - Tolling System
Existing Downtown Tunnels		30	0	Mar-26-2016	Apr-24-2016	SKW-7DAY (DTT)								
DTT-PL-555	Punchlist - Existing DTT Rehab	30	0	Mar-26-2016	Apr-24-2016	SKW-7DAY (DTT)								■ Punchlist - Existing DTT Rehab
Existing Midtown Tunnel		30	1	Dec-29-2017	Jan-27-2018	SKW-7DAY (MTT1)								
MTT1-PL-555	Punchlist - Existing MTT Rehab	30	1	Dec-29-2017	Jan-27-2018	SKW-7DAY (MTT1)								■ Punchlist
Owner & Temporary Facilities		1706	0	Jan-04-2012	Sep-21-2018	SKW-5DOUT (MTT2)								
Owner's Facilities		1697	0	Jan-17-2012	Sep-21-2018	SKW-5DOUT (MTT2)								
Owner Facilities		1697	0	Jan-17-2012	Sep-21-2018	SKW-5DOUT (MTT2)								
OWNF-VDOT-005	Erect & Outfit VDOT Office - by ERC	30	227	Jan-17-2012	Feb-28-2012	SKW-5DOUT (MTT2)		■ Erect & Outfit VDOT Office - by ERC						
OWNF-VDOT-999	De-Mobilize VDOT Office - by ERC	20	0	Aug-27-2018	Sep-21-2018	SKW-5DOUT (MTT2)								■ De-Mob
Temporary SKW Facilities		1556	45	Jan-04-2012	Feb-23-2018	SKW-5DOUT (MTT2)								
Temporary Structure / Facilities		1556	45	Jan-04-2012	Feb-23-2018	SKW-5DOUT (MTT2)								
TEMP-SKW-005	Erect & Outfit SKW Office	30	236	Jan-04-2012	Feb-14-2012	SKW-5DOUT (MTT2)		■ Erect & Outfit SKW Office						
TEMP-SKW-999	De-Mobilize SKW Office	20	45	Jan-29-2018	Feb-23-2018	SKW-5DOUT (MTT2)								■ De-Mob
Submittals		1162	110	Dec-07-2011	Jul-11-2016	SKW-5DINT (MTT2)								
New Midtown Tunnel		61	181	Dec-07-2011	Mar-05-2012	SKW-5DINT (MTT2)								
New Midtown Tunnel		61	181	Dec-07-2011	Mar-05-2012	SKW-5DINT (MTT2)								
SUBM-METH-001.0	Method Statement - Concrete Works (TR Section 1.15.17)	20	181	Dec-07-2011	Jan-05-2012	SKW-5DINT (MTT2)		■ Method Statement - Concrete Works (TR Section 1.15.17)						
SUBM-METH-002.0	Method Statement - Concrete Placement and Curing (TR Section 1.15.17)	20	181	Jan-06-2012	Feb-02-2012	SKW-5DINT (MTT2)		■ Method Statement - Concrete Placement and Curing (TR Section 1.15.17)						
SUBM-METH-001.1	Submit Method Statement - Concrete Works (TR Section 1.15.17)	1	221	Jan-06-2012	Jan-06-2012	SKW-5DINT (MTT2)		■ Submit Method Statement - Concrete Works (TR Section 1.15.17)						
SUBM-METH-003.0	Method Statement - Temporary Pre-Stressing (TR Section 1.15.17)	20	181	Feb-03-2012	Mar-02-2012	SKW-5DINT (MTT2)		■ Method Statement - Temporary Pre-Stressing (TR Section 1.15.17)						
SUBM-METH-002.1	Submit Method Statement - Concrete Placement and Curing (TR Section 1.15.17)	1	201	Feb-03-2012	Feb-03-2012	SKW-5DINT (MTT2)		■ Submit Method Statement - Concrete Placement and Curing (TR Section 1.15.17)						
SUBM-METH-003.1	Submit Method Statement - Temporary Pre-Stressing (TR Section 1.15.17)	1	181	Mar-05-2012	Mar-05-2012	SKW-5DINT (MTT2)		■ Submit Method Statement - Temporary Pre-Stressing (TR Section 1.15.17)						
D1 - Tunnel Fabrication		288	73	Dec-07-2011	Jan-25-2013	SKW-5DINT (MTT2)								
Tunnel Fabrication		288	73	Dec-07-2011	Jan-25-2013	SKW-5DINT (MTT2)								
SUBM-METH-004.0	Method Statement - Crack Injection (TR Section 1.15.17)	20	201	Dec-07-2011	Jan-05-2012	SKW-5DINT (MTT2)		■ Method Statement - Crack Injection (TR Section 1.15.17)						
SUBM-TFAB-015.0	Mock-Up Construction Plan (TR Section 1.15.5.B)	20	207	Jan-03-2012	Jan-30-2012	SKW-5DINT (MTT2)		■ Mock-Up Construction Plan (TR Section 1.15.5.B)						
SUBM-METH-009.0	Method Statement - Float Out & Towing (TR Section 1.15.17)	20	201	Jan-06-2012	Feb-02-2012	SKW-5DINT (MTT2)		■ Method Statement - Float Out & Towing (TR Section 1.15.17)						
SUBM-METH-004.1	Submit Method Statement - Crack Injection (TR Section 1.15.17)	1	221	Jan-06-2012	Jan-06-2012	SKW-5DINT (MTT2)		■ Submit Method Statement - Crack Injection (TR Section 1.15.17)						
SUBM-TFAB-015.1	Submit Mock-Up Construction Plan (TR Section 1.15.5.B)	1	207	Jan-31-2012	Jan-31-2012	SKW-5DINT (MTT2)		■ Submit Mock-Up Construction Plan (TR Section 1.15.5.B)						
SUBM-METH-009.1	Submit Method Statement - Float Out & Towing (TR Section 1.15.17)	1	201	Feb-03-2012	Feb-03-2012	SKW-5DINT (MTT2)		■ Submit Method Statement - Float Out & Towing (TR Section 1.15.17)						
SUBM-TFAB-010.0	Crack Control Plan (TR Section 1.15.11.E)	20	86	Jun-22-2012	Jul-20-2012	SKW-5DINT (MTT2)		■ Crack Control Plan (TR Section 1.15.11.E)						
SUBM-TFAB-010.1	Submit Crack Control Plan (TR Section 1.15.11.E)	1	86	Jul-23-2012	Jul-23-2012	SKW-5DINT (MTT2)		■ Submit Crack Control Plan (TR Section 1.15.11.E)						
SUBM-TFAB-005.0	Mock-Up Temperature Monitoring Report (TR Section 1.15.5.E)	20	73	Dec-27-2012	Jan-24-2013	SKW-5DINT (MTT2)		■ Mock-Up Temperature Monitoring Report (TR Section 1.15.5.E)						
SUBM-TFAB-005.1	Submit Mock-Up Temperature Monitoring Report (TR Section 1.15.5.E)	1	73	Jan-25-2013	Jan-25-2013	SKW-5DINT (MTT2)		■ Submit Mock-Up Temperature Monitoring Report (TR Section 1.15.5.E)						
D2 - Dredging		21	205	Dec-07-2011	Jan-06-2012	SKW-5DINT (MTT2)								
Dredging		21	205	Dec-07-2011	Jan-06-2012	SKW-5DINT (MTT2)								
SUBM-METH-006.0	Method Statement - Dredging (TR Section 1.15.17)	20	205	Dec-07-2011	Jan-05-2012	SKW-5DINT (MTT2)		■ Method Statement - Dredging (TR Section 1.15.17)						
SUBM-METH-006.1	Submit Method Statement - Dredging (TR Section 1.15.17)	1	205	Jan-06-2012	Jan-06-2012	SKW-5DINT (MTT2)		■ Submit Method Statement - Dredging (TR Section 1.15.17)						
D3 - Marine Work		141	101	Dec-07-2011	Jun-26-2012	SKW-5DINT (MTT2)								
Marine Work		141	101	Dec-07-2011	Jun-26-2012	SKW-5DINT (MTT2)								
SUBM-METH-005.0	Method Statement - Marine Works (TR Section 1.15.17)	20	101	Dec-07-2011	Jan-05-2012	SKW-5DINT (MTT2)		■ Method Statement - Marine Works (TR Section 1.15.17)						
SUBM-METH-007.0	Method Statement - Maintenance Dredging of Tunnel Trench (TR Section 1.15.17)	20	101	Jan-06-2012	Feb-02-2012	SKW-5DINT (MTT2)		■ Method Statement - Maintenance Dredging of Tunnel Trench (TR Section 1.15.17)						
SUBM-METH-005.1	Submit Method Statement - Marine Works (TR Section 1.15.17)	1	221	Jan-06-2012	Jan-06-2012	SKW-5DINT (MTT2)		■ Submit Method Statement - Marine Works (TR Section 1.15.17)						
SUBM-METH-008.0	Method Statement - Tunnel Foundation Placement (TR Section 1.15.17)	20	101	Feb-03-2012	Mar-02-2012	SKW-5DINT (MTT2)		■ Method Statement - Tunnel Foundation Placement (TR Section 1.15.17)						
SUBM-METH-007.1	Submit Method Statement - Maintenance Dredging of Tunnel Trench (TR Section 1.15.17)	1	201	Feb-03-2012	Feb-03-2012	SKW-5DINT (MTT2)		■ Submit Method Statement - Maintenance Dredging of Tunnel Trench (TR Section 1.15.17)						
SUBM-METH-010.0	Method Statement - Tunnel Immersion (TR Section 1.15.17)	20	101	Mar-05-2012	Mar-30-2012	SKW-5DINT (MTT2)		■ Method Statement - Tunnel Immersion (TR Section 1.15.17)						

Activity ID	Activity Name	OD	TF	Start	Finish	Calendar	2011	2012	2013	2014	2015	2016	2017	2018
SUBM-METH-008.1	Submit Method Statement - Tunnel Foundation Placement (TR Section 1.15.17)	1	181	Mar-05-2012	Mar-05-2012	SKW-5DINT (MTT2)								
SUBM-METH-011.0	Method Statement - Marine Backfill (TR Section 1.15.17)	20	101	Apr-02-2012	Apr-27-2012	SKW-5DINT (MTT2)								
SUBM-METH-010.1	Submit Method Statement - Tunnel Immersion (TR Section 1.15.17)	1	161	Apr-02-2012	Apr-02-2012	SKW-5DINT (MTT2)								
SUBM-METH-012.0	Method Statement - Ballast (TR Section 1.15.17)	20	101	Apr-30-2012	May-25-2012	SKW-5DINT (MTT2)								
SUBM-METH-011.1	Submit Method Statement - Marine Backfill (TR Section 1.15.17)	1	141	Apr-30-2012	Apr-30-2012	SKW-5DINT (MTT2)								
SUBM-METH-013.0	Method Statement - Tunnel Closure Joint (TR Section 1.15.17)	20	101	May-29-2012	Jun-25-2012	SKW-5DINT (MTT2)								
SUBM-METH-012.1	Submit Method Statement - Ballast (TR Section 1.15.17)	1	121	May-29-2012	May-29-2012	SKW-5DINT (MTT2)								
SUBM-METH-013.1	Submit Method Statement - Tunnel Closure Joint (TR Section 1.15.17)	1	101	Jun-26-2012	Jun-26-2012	SKW-5DINT (MTT2)								
D7 - Tunnel Interior - M&E Systems		740	110	Aug-07-2013	Jul-11-2016	SKW-5DINT (MTT2)								
Mechanical & Electrical Systems		740	110	Aug-07-2013	Jul-11-2016	SKW-5DINT (MTT2)								
SUBM-TSYS-005	Submit Start-Up & Commissioning Plan (TR Section 1.16.1.E.3)	40	643	Aug-07-2013	Oct-02-2013	SKW-5DINT (MTT2)								
SUBM-TSYS-105	Submit Start-Up & Commissioning Reports (TR Section 1.16.1.E.3)	20	110	Jun-13-2016	Jul-11-2016	SKW-5DINT (MTT2)								
New Midtown Tunnel		1489	192	Jan-21-2011 A	Feb-08-2017									
Permits		347	117	Jan-21-2011 A	Aug-02-2012	SKW-5DINT (MTT2)								
All Permits		347	117	Jan-21-2011 A	Aug-02-2012	SKW-5DINT (MTT2)								
Permits - New Midtown Tunnel		347	117	Jan-21-2011 A	Aug-02-2012	SKW-5DINT (MTT2)								
PMT-MTT2-100	Prepare & Submit Virginia Storm Water Management Plan (VSMP) - New Midtown Tunnel	20	147	Feb-01-2012	Feb-29-2012	SKW-5DINT (MTT2)								
Joint Permits		347	44	Jan-21-2011 A	Aug-02-2012	SKW-5DINT (MTT2)								
Water Line Relocation		88		Jan-21-2011 A	Jun-08-2011 A	SKW-5DINT (MTT2)								
JPA-WTRL-005	Water Line JPA Submitted	0		Jan-21-2011 A		SKW-5DINT (MTT2)								
JPA-WTRL-100	Water Line JPA Review & Approval Period	88		Jan-21-2011 A	Jun-02-2011 A	SKW-5DINT (MTT2)								
JPA-WTRL-999	Water Line JPA Issued	0			Jun-08-2011 A	SKW-5DINT (MTT2)								
Project		305	44	Jul-28-2011 A	Aug-02-2012	SKW-5DINT (MTT2)								
JPA-PROJ-100	Project JPA Review & Approval Period	260	44	Jul-28-2011 A	Aug-02-2012	SKW-5DINT (MTT2)								
JPA-PROJ-005	Project JPA Submitted	0		Jul-28-2011 A		SKW-5DINT (MTT2)								
JPA-PROJ-999	Project JPA Issued	0	44		Aug-02-2012	SKW-5DINT (MTT2)								
Sewer Line Relocation		88	213	Aug-02-2011 A	Dec-02-2011	SKW-5DINT (MTT2)								
JPA-SEWL-100	Sewer Line JPA Review & Approval Period	88	213	Aug-02-2011 A	Dec-02-2011	SKW-5DINT (MTT2)								
JPA-SEWL-005	Sewer Line JPA Submitted	0		Aug-02-2011 A		SKW-5DINT (MTT2)								
JPA-SEWL-999	Sewer Line JPA Issued	0	213		Dec-02-2011	SKW-5DINT (MTT2)								
Miscellaneous Permits		260	117	Jul-28-2011 A	Aug-02-2012	SKW-5DINT (MTT2)								
PMT-MTT2-005	Wetlands (Construction Phase) - New Midtown Tunnel	260	44	Jul-28-2011 A	Aug-02-2012	SKW-5DINT (MTT2)								
PMT-MTT2-010	Dredge Disposal	260	44	Jul-28-2011 A	Aug-02-2012	SKW-5DINT (MTT2)								
PMT-MTT2-015	Special Marine Habitats	260	44	Jul-28-2011 A	Aug-02-2012	SKW-5DINT (MTT2)								
PMT-MTT2-045	Tidal Wetlands, Dunes and Beaches	260	44	Jul-28-2011 A	Aug-02-2012	SKW-5DINT (MTT2)								
PMT-MTT2-020	Subaqueous Bed Permit	120	184	Jul-28-2011 A	Jan-16-2012	SKW-5DINT (MTT2)								
PMT-MTT2-025	Cultural Resources - New Midtown Tunnel	120	184	Jul-28-2011 A	Jan-16-2012	SKW-5DINT (MTT2)								
PMT-MTT2-030	Water Quality - VA Water Protection Permit (VA WPP) / Clean Water Act Section 401 - New Midtown Tunnel	120	184	Jul-28-2011 A	Jan-16-2012	SKW-5DINT (MTT2)								
PMT-MTT2-035	Navigation (Section 9 and 10 of River and Harbors Act)	120	184	Jul-28-2011 A	Jan-16-2012	SKW-5DINT (MTT2)								
PMT-MTT2-040	M-S Fishery Conservation and Management Act - Essential Fish Habitat	120	184	Jul-28-2011 A	Jan-16-2012	SKW-5DINT (MTT2)								
UTIL-PMTS-NFK	Utility Permitting; Local, State, DVP Pole Application - Norfolk Approach	60	127	Jan-04-2012	Mar-28-2012	SKW-5DINT (MTT2)								
PMT-MTT2-055	Storm Water Discharge / Storm Water Pollution Prevention Plan (SWPPP) - New Midtown Tunnel	20	147	Jan-04-2012	Jan-31-2012	SKW-5DINT (MTT2)								
PMT-MTT2-060	Storm Water Management and Erosion Control - New Midtown Tunnel	65	151	Jan-04-2012	Apr-04-2012	SKW-5DINT (MTT2)								
PMT-MTT2-075	EPA Hazardous Waste ID	65	154	Jan-04-2012	Apr-04-2012	SKW-5DINT (MTT2)								
PMT-MTT2-080	Virginia Pollutant Discharge Elimination System (PDAS) Water Discharge - New Midtown Tunnel	65	154	Jan-04-2012	Apr-04-2012	SKW-5DINT (MTT2)								
PMT-MTT2-070	Minor New Source Review (SR) Air Permit - New Midtown Tunnel	30	186	Jan-04-2012	Feb-14-2012	SKW-5DINT (MTT2)								
UTIL-PMTS-PTS	Utility Permitting; Local, State, DVP Pole Application - Portsmouth Approach	60	191	Jan-04-2012	Mar-28-2012	SKW-5DINT (MTT2)								
PMT-MTT2-065	Chesapeake Bay RPA / RMA - New Midtown Tunnel	20	246	Jan-04-2012	Jan-31-2012	SKW-5DINT (MTT2)								
Project Summary		1863	268	Jan-04-2012	Feb-08-2017	SKW-7DAY (MTT2)								
Right-of-Way		418	15	Jan-04-2012	Feb-24-2013	SKW-7DAY (MTT2)								
SUMM-ROW-PTS	ROW Design & Acquisition - Portsmouth Approach	418	15	Jan-04-2012	Feb-24-2013	SKW-7DAY (MTT2)								
SUMM-ROW-NFK	ROW Design & Acquisition - Norfolk Approach	322	62	Jan-04-2012	Nov-20-2012	SKW-7DAY (MTT2)								
Harbor Utilities		239	36	Sep-04-2012	Apr-30-2013	SKW-7DAY (MTT2)								



Activity ID	Activity Name	OD	TF	Start	Finish	Calendar	Year											
							2011	2012	2013	2014	2015	2016	2017	2018				
SUMM-WTRL-005	Water Line Relocation	191	5	Sep-04-2012	Mar-13-2013	SKW-7DAY (MTT2)												
SUMM-SEWL-005	Sewer Line Relocation	183	36	Oct-30-2012	Apr-30-2013	SKW-7DAY (MTT2)												
Marine Work							477	85	Aug-04-2014	Nov-23-2015	SKW-7DAY (MTT2)							
SUMM-MAWK-SCRD	Screeding	388	5	Aug-04-2014	Aug-26-2015	SKW-7DAY (MTT2)												
SUMM-MAWK-TPL	Tunnel Element Placement	382	5	Aug-25-2014	Sep-10-2015	SKW-7DAY (MTT2)												
SUMM-MAWK-FILL	Marine Backfill	448	85	Sep-02-2014	Nov-23-2015	SKW-7DAY (MTT2)												
Tunnel Fabrication							780	27	Dec-11-2012	Jan-29-2015	SKW-7DAY (MTT2)							
SUMM-TFAB-MOCK	Tunnel Element Mock-Up	64	27	Dec-11-2012	Feb-12-2013	SKW-7DAY (MTT2)												
SUMM-TFAB-FO1	Tunnel Fabrication - Elements 1-6	321	24	Apr-18-2013	Mar-04-2014	SKW-7DAY (MTT2)												
SUMM-TFAB-FO2	Tunnel Fabrication - Elements 7-11	290	27	Apr-15-2014	Jan-29-2015	SKW-7DAY (MTT2)												
Dredging							753	317	Aug-03-2012	Aug-25-2014	SKW-7DAY (MTT2)							
SUMM-DRED-ELIZ	Dredging	582	5	Aug-03-2012	Mar-07-2014	SKW-7DAY (MTT2)												
SUMM-DRED-PSOE	Portsmouth Dredge SOE	244	16	Feb-08-2013	Oct-09-2013	SKW-7DAY (MTT2)												
SUMM-DRED-NSOE	Norfolk Dredge SOE	20	218	May-03-2013	May-22-2013	SKW-7DAY (MTT2)												
SUMM-DRED-PILE	Timber Pile & Fill Gravel	169	317	Mar-10-2014	Aug-25-2014	SKW-7DAY (MTT2)												
Portsmouth Approach							1294	48	Aug-24-2012	Mar-09-2016	SKW-7DAY (MTT2)							
SUMM-PTS-005	Utility Relocations - Portsmouth Approach	467	36	Aug-24-2012	Dec-03-2013	SKW-7DAY (MTT2)												
SUMM-PTS-010	Cut & Cover SOE & Excavation - Portsmouth Approach	186	17	Jun-11-2013	Dec-13-2013	SKW-7DAY (MTT2)												
SUMM-PTS-020	Boat Section SOE & Excavation - Portsmouth Approach	181	35	Dec-04-2013	Jun-02-2014	SKW-7DAY (MTT2)												
SUMM-PTS-015	Cut & Cover Concrete - Portsmouth Approach	277	173	Dec-16-2013	Sep-18-2014	SKW-7DAY (MTT2)												
SUMM-PTS-025	Boat Section Concrete - Portsmouth Approach	275	34	Jun-03-2014	Mar-04-2015	SKW-7DAY (MTT2)												
SUMM-PTS-035	Portsmouth Tunnel Support Building (Above EL. 13'-0")	279	48	Jun-05-2015	Mar-09-2016	SKW-7DAY (MTT2)												
Norfolk Approach							1273	98	Jul-12-2012	Jan-05-2016	SKW-7DAY (MTT2)							
SUMM-NFK-005	Utility Relocations - Norfolk Approach	548	73	Jul-12-2012	Jan-10-2014	SKW-7DAY (MTT2)												
SUMM-NFK-010	Cut & Cover SOE & Excavation - Norfolk Approach	248	109	Oct-01-2013	Jun-05-2014	SKW-7DAY (MTT2)												
SUMM-NFK-020	Boat Section SOE & Excavation - Norfolk Approach	256	74	Jan-13-2014	Sep-25-2014	SKW-7DAY (MTT2)												
SUMM-NFK-015	Cut & Cover Concrete - Norfolk Approach	239	108	Jun-06-2014	Jan-30-2015	SKW-7DAY (MTT2)												
SUMM-NFK-025	Boat Section Concrete - Norfolk Approach	238	74	Sep-26-2014	May-21-2015	SKW-7DAY (MTT2)												
SUMM-NFK-030	Norfolk Tunnel Support Building - Foundation & Slab	39	106	Feb-02-2015	Mar-12-2015	SKW-7DAY (MTT2)												
SUMM-NFK-035	Norfolk Tunnel Support Building (Above EL. 13'-0")	299	98	Mar-13-2015	Jan-05-2016	SKW-7DAY (MTT2)												
SUMM-NFK-CLO	Closure Section Concrete - Norfolk Approach	61	3	Sep-11-2015	Nov-10-2015	SKW-7DAY (MTT2)												
Tunnel Interior Structural							383	67	Mar-05-2015	Mar-21-2016	SKW-7DAY (MTT2)							
SUMM-TINT-010	Tunnel Interior - Structural	383	67	Mar-05-2015	Mar-21-2016	SKW-7DAY (MTT2)												
Finishes							477	5	Feb-27-2015	Jun-17-2016	SKW-7DAY (MTT2)							
SUMM-TFIN-010	Tunnel Interior - Finishes (Incl. Tunnel Support Bldg Slabs @ EL. 13'-0")	477	5	Feb-27-2015	Jun-17-2016	SKW-7DAY (MTT2)												
Mechanical & Electrical Systems							318	20	Jul-14-2015	May-26-2016	SKW-7DAY (MTT2)							
SUMM-TSYS-ELEC	Tunnel Interior - Electrical (Incl. Tunnel Support Bldgs)	318	6	Jul-14-2015	May-26-2016	SKW-7DAY (MTT2)												
SUMM-TSYS-MECH	Tunnel Interior - Mechanical	225	50	Sep-15-2015	Apr-26-2016	SKW-7DAY (MTT2)												
Project Wide Work							1260	268	Aug-29-2013	Feb-08-2017	SKW-7DAY (MTT2)							
SUMM-ITS-005	ITS / Signage - Reroute Existing VDOT ITS	211	83	Aug-29-2013	Mar-27-2014	SKW-7DAY (MTT2)												
SUMM-ITS-010	ITS / Signage - East of Downtown Tunnels	266	60	Dec-03-2013	Aug-25-2014	SKW-7DAY (MTT2)												
SUMM-ITS-015	ITS / Signage - West of Downtown Tunnels	365	59	Feb-25-2014	Feb-24-2015	SKW-7DAY (MTT2)												
SUMM-ITS-020	ITS / Signage - West of Midtown Tunnel (Including MLK)	519	64	Jul-24-2014	Dec-24-2015	SKW-7DAY (MTT2)												
SUMM-ITS-025	ITS / Signage - East of Midtown Tunnel	330	273	May-12-2015	Apr-05-2016	SKW-7DAY (MTT2)												
SUMM-ITS-030	ITS / Signage - Control Room Modifications (Existing DTT and MTT)	309	268	Apr-06-2016	Feb-08-2017	SKW-7DAY (MTT2)												
D15 - Design							370	597	Jan-04-2012	Jun-18-2013	SKW-5DINT (MTT2)							
Design							370	597	Jan-04-2012	Jun-18-2013	SKW-5DINT (MTT2)							
General							120	18	Jan-04-2012	Jun-21-2012	SKW-5DINT (MTT2)							
DGN-PB.1-005	Project Development Plans	120	18	Jan-04-2012	Jun-21-2012	SKW-5DINT (MTT2)												
Civil							283	56	Jan-04-2012	Feb-13-2013	SKW-5DINT (MTT2)							
DGN-PB.3-005	Design - HDD ROW Plans	65	3	Jan-04-2012	Apr-04-2012	SKW-5DINT (MTT2)												
DGN-PB.3-105	Design - MTT ROW Road Plans	127	10	Jan-04-2012	Jul-02-2012	SKW-5DINT (MTT2)												
DGN-PB.3-305	Design - MTT Utility Relocation Plans (60%)	126	21	Jan-04-2012	Jun-29-2012	SKW-5DINT (MTT2)												



Activity ID	Activity Name	OD	TF	Start	Finish	Calendar	2011	2012	2013	2014	2015	2016	2017	2018
TFAB-DRED-005	Access Dredging - Sparrows Point	25	18	Feb-04-2014	Mar-11-2014	SKW-5DOUT (MTT2)				█ Access Dredging - Sparrows Point				
TFAB-MOBI-100	Re-Mobilize for Float Out #2	22	18	Mar-14-2014	Apr-14-2014	SKW-5DOUT (MTT2)				█ Re-Mobilize for Float Out #2				
TFAB-MOBI-998	Demobilize Equipment - Sparrows Point	20	22	Feb-10-2015	Mar-10-2015	SKW-5DOUT (MTT2)					█ Demobilize Equipment - Sparrows Point			
TFAB-MOBI-999	Demobilize Sparrows Point Yard & Field Office	4	22	Mar-11-2015	Mar-16-2015	SKW-5DOUT (MTT2)					█ Demobilize Sparrows Point Yard & Field Office			
Tunnel Mock-Up		81	59	Oct-23-2012	Feb-19-2013	SKW-5DOUT (MTT2)								
TFAB-MOCK-C05	FRP Tunnel Mock-Up Casting Slab	3	58	Oct-23-2012	Oct-25-2012	SKW-5DOUT (MTT2)				█ FRP Tunnel Mock-Up Casting Slab				
TFAB-MOCK-005	Invert Waterproofing - Tunnel Mockup (Pour 1)	1	28	Dec-11-2012	Dec-11-2012	SKW-5DOUT (MTT2)				█ Invert Waterproofing - Tunnel Mockup (Pour 1)				
TFAB-MOCK-010	Invert Waterproofing - Tunnel Mockup (Pour 2)	5	31	Dec-12-2012	Dec-18-2012	SKW-5DOUT (MTT2)				█ Invert Waterproofing - Tunnel Mockup (Pour 2)				
TFAB-MOCK-020	FRP Invert - Tunnel Mockup (Pour 2)	10	31	Dec-19-2012	Jan-03-2013	SKW-5DOUT (MTT2)				█ FRP Invert - Tunnel Mockup (Pour 2)				
TFAB-MOCK-015	FRP Invert - Tunnel Mockup (Pour 1)	5	18	Dec-27-2012	Jan-03-2013	SKW-5DOUT (MTT2)				█ FRP Invert - Tunnel Mockup (Pour 1)				
TFAB-MOCK-025	FRP Walls & Roof - Tunnel Mockup (Pour 1)	8	18	Jan-04-2013	Jan-15-2013	SKW-5DOUT (MTT2)				█ FRP Walls & Roof - Tunnel Mockup (Pour 1)				
TFAB-MOCK-030	FRP Walls & Roof - Tunnel Mockup (Pour 2)	15	18	Jan-16-2013	Feb-05-2013	SKW-5DOUT (MTT2)				█ FRP Walls & Roof - Tunnel Mockup (Pour 2)				
TFAB-MOCK-035	Wall & Roof Waterproofing - Tunnel Mockup	5	18	Feb-06-2013	Feb-12-2013	SKW-5DOUT (MTT2)				█ Wall & Roof Waterproofing - Tunnel Mockup				
TFAB-MOCK-999	Tunnel Mock-Up Approval	1	18	Feb-13-2013	Feb-13-2013	SKW-5DOUT (MTT2)				█ Tunnel Mock-Up Approval				
TFAB-DEMO-005	Demo/Haul-Off Tunnel Mock-Up	3	59	Feb-14-2013	Feb-19-2013	SKW-5DOUT (MTT2)				█ Demo/Haul-Off Tunnel Mock-Up				
Casting Cycle #1		264	28	Apr-18-2013	May-02-2014	SKW-5DOUT (MTT2)								
TFAB-WPFG-001	Invert Waterproofing - Tubes 1-6	48	18	Apr-18-2013	Jun-25-2013	SKW-5DOUT (MTT2)				█ Invert Waterproofing - Tubes 1-6				
TFAB-INV-001	FRP Inverts - Tubes 1-6	144	18	Apr-30-2013	Nov-20-2013	SKW-5DOUT (MTT2)				█ FRP Inverts - Tubes 1-6				
TFAB-WLRF-001	FRP Walls & Roofs - Tubes 1-6	174	18	May-14-2013	Jan-21-2014	SKW-5DOUT (MTT2)				█ FRP Walls & Roofs - Tubes 1-6				
TFAB-BALL-001	Install & Test Water Ballast Tank Systems - Tubes 1-6	126	18	Jun-19-2013	Dec-17-2013	SKW-5DOUT (MTT2)				█ Install & Test Water Ballast Tank Systems - Tubes 1-6				
TFAB-BULK-001	Construct Temporary Bulkheads - Tubes 1-6	116	18	Aug-21-2013	Feb-05-2014	SKW-5DOUT (MTT2)				█ Construct Temporary Bulkheads - Tubes 1-6				
TFAB-WPFG-101	Apply Wall & Roof Waterproofing - Tubes 1-6	116	18	Sep-05-2013	Feb-20-2014	SKW-5DOUT (MTT2)				█ Apply Wall & Roof Waterproofing - Tubes 1-6				
TFAB-OUTF-001	Pre-Launch Outfitting - Tubes 1-6	114	18	Sep-19-2013	Mar-04-2014	SKW-5DOUT (MTT2)				█ Pre-Launch Outfitting - Tubes 1-6				
TFAB-PREP-FO1	Prep for Float Out #1	22	18	Feb-07-2014	Mar-11-2014	SKW-5DOUT (MTT2)				█ Prep for Float Out #1				
TFAB-FO1	Float Out #1	2	18	Mar-12-2014	Mar-13-2014	SKW-5DOUT (MTT2)				█ Float Out #1				
TFAB-TOW-001	Tow Elements to Jobsite - Tubes 1-6	36	28	Mar-14-2014	May-02-2014	SKW-5DOUT (MTT2)				█ Tow Elements to Jobsite - Tubes 1-6				
Casting Cycle #2		236	18	Apr-15-2014	Mar-20-2015	SKW-5DOUT (MTT2)								
TFAB-WPFG-002	Invert Waterproofing - Tubes 7-11	40	18	Apr-15-2014	Jun-10-2014	SKW-5DOUT (MTT2)				█ Invert Waterproofing - Tubes 7-11				
TFAB-INV-002	FRP Inverts - Tubes 7-11	141	18	Apr-25-2014	Nov-12-2014	SKW-5DOUT (MTT2)				█ FRP Inverts - Tubes 7-11				
TFAB-WLRF-002	FRP Walls & Roofs - Tubes 7-11	171	18	May-09-2014	Jan-13-2015	SKW-5DOUT (MTT2)				█ FRP Walls & Roofs - Tubes 7-11				
TFAB-BALL-002	Install & Test Water Ballast Tank Systems - Tubes 7-11	123	18	Jun-16-2014	Dec-09-2014	SKW-5DOUT (MTT2)				█ Install & Test Water Ballast Tank Systems - Tubes 7-11				
TFAB-BULK-002	Construct Temporary Bulkheads - Tubes 7-11	113	18	Jul-29-2014	Jan-08-2015	SKW-5DOUT (MTT2)				█ Construct Temporary Bulkheads - Tubes 7-11				
TFAB-WPFG-102	Apply Wall & Roof Waterproofing - Tubes 7-11	113	18	Aug-12-2014	Jan-22-2015	SKW-5DOUT (MTT2)				█ Apply Wall & Roof Waterproofing - Tubes 7-11				
TFAB-OUTF-002	Pre-Launch Outfitting - Tubes 7-11	111	18	Aug-21-2014	Jan-29-2015	SKW-5DOUT (MTT2)				█ Pre-Launch Outfitting - Tubes 7-11				
TFAB-PREP-FO2	Prep for Float Out #2	20	18	Jan-09-2015	Feb-05-2015	SKW-5DOUT (MTT2)				█ Prep for Float Out #2				
TFAB-FO2	Float Out #2	2	18	Feb-06-2015	Feb-09-2015	SKW-5DOUT (MTT2)				█ Float Out #2				
TFAB-TOW-002	Tow Elements to Jobsite - Tubes 7-11	30	18	Feb-06-2015	Mar-20-2015	SKW-5DOUT (MTT2)				█ Tow Elements to Jobsite - Tubes 7-11				
D2 - Dredging		701	66	Aug-03-2012	Apr-12-2015									
Dredging Mobilization		701	66	Aug-03-2012	Apr-12-2015									
DRED-MOBI-005	Mobilize Dredging Sub	20	84	Aug-03-2012	Aug-22-2012	SKW-7DAY (MTT2)				█ Mobilize Dredging Sub				
Demolition of VPA Marine Ops Bldg		10	43	Dec-11-2012	Dec-24-2012	SKW-5DOUT (MTT2)								
DRED-DEMO-MOPS	Demo VPA Marine Operations Building	10	43	Dec-11-2012	Dec-24-2012	SKW-5DOUT (MTT2)				█ Demo VPA Marine Operations Building				
Removal of Known Obstructions		459	52	Oct-18-2012	Jan-19-2014	SKW-7DAY (MTT2)								
DRED-DEMO-005	Remove Existing Timber Pile (Area 2T)	99	23	Oct-18-2012	Jan-24-2013	SKW-7DAY (MTT2)				█ Remove Existing Timber Pile (Area 2T)				
DRED-DEMO-WTRL	Remove Water Line	30	5	Mar-14-2013	Apr-12-2013	SKW-7DAY (MTT2)				█ Remove Water Line				
DRED-DEMO-010	Remove Existing Timber Pile (STA 94+00.00 to 96+00.00)	16	16	Oct-10-2013	Oct-25-2013	SKW-7DAY (MTT2)				█ Remove Existing Timber Pile (STA 94+00.00 to 96+00.00)				
DRED-DEMO-015	Remove Existing Timber Pile (Inside Water Line)	86	52	Oct-26-2013	Jan-19-2014	SKW-7DAY (MTT2)				█ Remove Existing Timber Pile (Inside Water Line)				
DRED-DEMO-SEWL	Remove Sewer Line	55	25	Nov-07-2013	Dec-31-2013	SKW-7DAY (MTT2)				█ Remove Sewer Line				
Clear & Grub		30	5	Apr-13-2013	May-12-2013	SKW-7DAY (MTT2)								
DRED-SITE-005	Clearing & Grubbing / Demo	30	5	Apr-13-2013	May-12-2013	SKW-7DAY (MTT2)				█ Clearing & Grubbing / Demo				
Land Excavation		78	44	Sep-06-2013	Nov-22-2013	SKW-7DAY (MTT2)								
DRED-EXCA-005	Excavate Areas 1A and 1T to -10 ft (Inside Slot) - Upland	34	16	Sep-06-2013	Oct-09-2013	SKW-7DAY (MTT2)				█ Excavate Areas 1A and 1T to -10 ft (Inside Slot) - Upland				

Activity ID	Activity Name	OD	TF	Start	Finish	Calendar	2011	2012	2013	2014	2015	2016	2017	2018
DRED-EXCA-010	Excavate Areas 1A and 1T to -10 ft (Outside Slot) - Upland	34	44	Oct-10-2013	Nov-12-2013	SKW-7DAY (MTT2)				█				
DRED-EXCA-015	Excavate Area 5T to -10 ft to Grade (Upland)	10	44	Nov-13-2013	Nov-22-2013	SKW-7DAY (MTT2)				█				
Dredging Support of Excavation		170	53	Feb-08-2013	Oct-09-2013	SKW-5DOUT (MTT2)								
DRED-SOE-P10	Portsmouth Dredge SOE - STA 96+00.00 to 90+01.50 (South)	70	12	Feb-08-2013	May-17-2013	SKW-5DOUT (MTT2)				█				
DRED-SOE-N05	Norfolk Dredge SOE - STA 128+13.92 to 125+04	20	144	May-03-2013	May-31-2013	SKW-5DOUT (MTT2)				█				
DRED-SOE-P05	Portsmouth Dredge SOE - STA 96+00.00 to 90+01.50 (North)	50	12	May-20-2013	Jul-30-2013	SKW-5DOUT (MTT2)				█				
DRED-SOE-P15	Portsmouth Dredge SOE - STA 102+00.00 to 96+00.00 (North)	50	12	Jul-31-2013	Oct-09-2013	SKW-5DOUT (MTT2)				█				
Dredging of Elizabeth River		907	4	Oct-18-2012	Apr-12-2015	SKW-7DAY (MTT2)								
DRED-2T-005	Dredge Area 2T (Between Pile)	99	23	Oct-18-2012	Jan-24-2013	SKW-7DAY (MTT2)				█				
DRED-2T-010	Dredge Area 2T - Top 10 ft Upland (Outside Pile Area)	35	23	Jan-25-2013	Feb-28-2013	SKW-7DAY (MTT2)				█				
DRED-2T-015	Dredge Area 2T - Top 10 ft Upland (Over Pile Area)	25	23	Mar-01-2013	Mar-25-2013	SKW-7DAY (MTT2)				█				
DRED-EXCA-R05	Rough Cut Areas 3 & 4 (Alluvial)	64	5	Sep-04-2013	Nov-06-2013	SKW-7DAY (MTT2)				█				
DRED-EXCA-020	Excavate Area 1T -10 ft to Grade (ODMDS)	76	16	Oct-26-2013	Jan-09-2014	SKW-7DAY (MTT2)				█				
DRED-EXCA-R10	Rough Cut Areas 3 & 4 (Norfolk)	55	5	Nov-07-2013	Dec-31-2013	SKW-7DAY (MTT2)				█				
DRED-2T-020	Dredge Area 2T (Partial) Top 10 ft - Upland	20	5	Jan-01-2014	Jan-20-2014	SKW-7DAY (MTT2)				█				
DRED-2T-025	Dredge Areas 1B & 2B to Grade - ODMDS	46	5	Jan-21-2014	Mar-07-2014	SKW-7DAY (MTT2)				█				
DRED-GRDG-005	Final Grade - Tubes 5 & 6	14	3	Oct-21-2014	Nov-03-2014	SKW-7DAY (MTT2)				█				
DRED-GRDG-010	Final Grade - Tubes 7 & 8	14	13	Dec-26-2014	Jan-08-2015	SKW-7DAY (MTT2)				█				
DRED-GRDG-015	Final Grade - Tubes 9 - 11	20	4	Mar-24-2015	Apr-12-2015	SKW-7DAY (MTT2)				█				
Timber Piles & Fill Gravel (Ground Improvements)		122	219	Mar-10-2014	Aug-28-2014	SKW-5DOUT (MTT2)								
DRED-PILE-001	Drive Timber Piles - Tube 1	50	3	Mar-10-2014	May-16-2014	SKW-5DOUT (MTT2)				█				
DRED-PILE-003	Drive Timber Piles - Tube 3	52	36	Mar-31-2014	Jun-11-2014	SKW-5DOUT (MTT2)				█				
DRED-PILE-002	Drive Timber Piles - Tube 2	50	3	May-19-2014	Jul-29-2014	SKW-5DOUT (MTT2)				█				
DRED-PILE-011	Drive Timber Piles - Tube 11	52	219	Jun-12-2014	Aug-25-2014	SKW-5DOUT (MTT2)				█				
DRED-FILL-001	Fill Gravel - Tube 1	3	3	Jul-30-2014	Aug-01-2014	SKW-5DOUT (MTT2)				█				
DRED-FILL-002	Fill Gravel - Tube 2	3	20	Aug-04-2014	Aug-06-2014	SKW-5DOUT (MTT2)				█				
DRED-FILL-003	Fill Gravel - Tube 3	3	37	Aug-07-2014	Aug-11-2014	SKW-5DOUT (MTT2)				█				
DRED-FILL-011	Fill Gravel - Tube 11	3	219	Aug-26-2014	Aug-28-2014	SKW-5DOUT (MTT2)				█				
D3 - Marine Work		1036	130	Jan-04-2012	Dec-23-2015									
Marine Work		1036	130	Jan-04-2012	Dec-23-2015									
Marine Equipment Design (By SKW)		280	347	Jan-04-2012	Feb-08-2013	SKW-5DINT (MTT2)								
DGN-MAWK-SCRD	Design & Approval - Screed Barge & Equipment	75	108	Jan-04-2012	Apr-18-2012	SKW-5DINT (MTT2)				█				
DGN-MAWK-TPL	Design & Approval - Placing Barge & Equipment	115	108	Apr-19-2012	Oct-01-2012	SKW-5DINT (MTT2)				█				
DGN-MAWK-FILL	Design & Approval - Backfill Barge	50	178	Oct-02-2012	Dec-12-2012	SKW-5DINT (MTT2)				█				
DGN-MAWK-MARS	Design & Approval - Marshalling Piers	25	208	Dec-13-2012	Jan-18-2013	SKW-5DINT (MTT2)				█				
DGN-MAWK-NFKP	Design & Approval - Norfolk Pier	15	347	Jan-21-2013	Feb-08-2013	SKW-5DINT (MTT2)				█				
Marine Equipment & Temporary Facilities		931	126	Apr-19-2012	Dec-23-2015	SKW-5DOUT (MTT2)								
MAWK-FAB-025	Fabricate & Deliver - Screed Barge & Equipment	80	143	Apr-19-2012	Aug-10-2012	SKW-5DOUT (MTT2)				█				
MAWK-FAB-035	Fabricate & Deliver - Placing Barge & Equipment	120	108	Oct-02-2012	Mar-25-2013	SKW-5DOUT (MTT2)				█				
MAWK-FAB-015	Fabricate & Deliver - Backfill Barge	55	108	Mar-26-2013	Jun-11-2013	SKW-5DOUT (MTT2)				█				
MAWK-FAB-005	Fabricate & Deliver - Marshalling Piers	30	108	Jun-12-2013	Jul-24-2013	SKW-5DOUT (MTT2)				█				
MAWK-MARS-005	Erect Marshalling Piers	60	108	Jul-25-2013	Oct-17-2013	SKW-5DOUT (MTT2)				█				
MAWK-FAB-010	Fabricate & Deliver - Norfolk Pier	20	232	Jul-25-2013	Aug-21-2013	SKW-5DOUT (MTT2)				█				
MAWK-NFK-005	Erect Norfolk Pier	10	232	Aug-22-2013	Sep-05-2013	SKW-5DOUT (MTT2)				█				
MAWK-MARS-010	Drive Dolphins - Marshalling Piers	20	108	Oct-18-2013	Nov-14-2013	SKW-5DOUT (MTT2)				█				
MAWK-EQPT-005	Assemble & Test - Screed Barge & Equipment	10	192	Oct-18-2013	Oct-31-2013	SKW-5DOUT (MTT2)				█				
MAWK-EQPT-010	Assemble & Test - Placing Barge & Equipment	10	197	Nov-01-2013	Nov-14-2013	SKW-5DOUT (MTT2)				█				
MAWK-EQPT-015	Assemble & Test - Backfill Barge	10	264	Nov-15-2013	Dec-02-2013	SKW-5DOUT (MTT2)				█				
MAWK-MOBI-999	De-Mobilize Marshalling Piers & Norfolk Pier	20	126	Nov-24-2015	Dec-23-2015	SKW-5DOUT (MTT2)								█
Screed Foundation		270	3	Aug-04-2014	Aug-26-2015	SKW-5DOUT (MTT2)								
MAWK-SCRD-001	Screed Foundation - Tube 1	15	3	Aug-04-2014	Aug-22-2014	SKW-5DOUT (MTT2)				█				
MAWK-SCRD-002	Screed Foundation - Tube 2	15	3	Sep-02-2014	Sep-22-2014	SKW-5DOUT (MTT2)				█				
MAWK-SCRD-003	Screed Foundation - Tube 3	15	3	Sep-30-2014	Oct-20-2014	SKW-5DOUT (MTT2)				█				

Activity ID	Activity Name	OD	TF	Start	Finish	Calendar	2011	2012	2013	2014	2015	2016	2017	2018
MAWK-SCRD-004	Screed Foundation - Tube 4	15	3	Nov-04-2014	Nov-24-2014	SKW-5DOUT (MTT2)					█			
MAWK-SCRD-005	Screed Foundation - Tube 5	15	3	Dec-04-2014	Dec-24-2014	SKW-5DOUT (MTT2)					█			
MAWK-SCRD-006	Screed Foundation - Tube 6	15	3	Jan-19-2015	Feb-06-2015	SKW-5DOUT (MTT2)					█			
MAWK-SCRD-007	Screed Foundation - Tube 7	15	3	Mar-03-2015	Mar-23-2015	SKW-5DOUT (MTT2)					█			
MAWK-SCRD-008	Screed Foundation - Tube 8	20	3	Apr-14-2015	May-11-2015	SKW-5DOUT (MTT2)					█			
MAWK-SCRD-009	Screed Foundation - Tube 9	15	3	Jun-03-2015	Jun-23-2015	SKW-5DOUT (MTT2)					█			
MAWK-SCRD-011	Screed Foundation - Tube 11	15	3	Jul-09-2015	Jul-29-2015	SKW-5DOUT (MTT2)					█			
MAWK-SCRD-010	Screed Foundation - Tube 10	15	3	Aug-06-2015	Aug-26-2015	SKW-5DOUT (MTT2)					█			
Tunnel Element Outfitting & Placement		373	3	Mar-24-2014	Sep-10-2015	SKW-5DOUT (MTT2)								
MAWK-OUTF-001	Placement Outfitting - Tube 1	10	28	Mar-24-2014	Apr-04-2014	SKW-5DOUT (MTT2)					█			
MAWK-TPL-001	Place Tube 1	5	3	Aug-25-2014	Aug-29-2014	SKW-5DOUT (MTT2)					█			
MAWK-OUTF-002	Placement Outfitting - Tube 2	10	8	Sep-02-2014	Sep-15-2014	SKW-5DOUT (MTT2)					█			
MAWK-TPL-002	Place Tube 2	5	3	Sep-23-2014	Sep-29-2014	SKW-5DOUT (MTT2)					█			
MAWK-OUTF-003	Placement Outfitting - Tube 3	10	8	Sep-30-2014	Oct-13-2014	SKW-5DOUT (MTT2)					█			
MAWK-TPL-003	Place Tube 3	5	3	Oct-21-2014	Oct-27-2014	SKW-5DOUT (MTT2)					█			
MAWK-OUTF-004	Placement Outfitting - Tube 4	10	13	Oct-28-2014	Nov-10-2014	SKW-5DOUT (MTT2)					█			
MAWK-TPL-004	Place Tube 4	5	3	Nov-25-2014	Dec-03-2014	SKW-5DOUT (MTT2)					█			
MAWK-OUTF-005	Placement Outfitting - Tube 5	10	8	Dec-04-2014	Dec-17-2014	SKW-5DOUT (MTT2)					█			
MAWK-TPL-005	Place Tube 5	15	3	Dec-26-2014	Jan-16-2015	SKW-5DOUT (MTT2)					█			
MAWK-OUTF-006	Placement Outfitting - Tube 6	10	8	Jan-19-2015	Jan-30-2015	SKW-5DOUT (MTT2)					█			
MAWK-TPL-006	Place Tube 6	15	3	Feb-09-2015	Mar-02-2015	SKW-5DOUT (MTT2)					█			
MAWK-OUTF-007	Placement Outfitting - Tube 7	10	8	Mar-03-2015	Mar-16-2015	SKW-5DOUT (MTT2)					█			
MAWK-TPL-007	Place Tube 7	15	3	Mar-24-2015	Apr-13-2015	SKW-5DOUT (MTT2)					█			
MAWK-OUTF-008	Placement Outfitting - Tube 8	10	13	Apr-14-2015	Apr-27-2015	SKW-5DOUT (MTT2)					█			
MAWK-TPL-008	Place Tube 8	15	3	May-12-2015	Jun-02-2015	SKW-5DOUT (MTT2)					█			
MAWK-OUTF-009	Placement Outfitting - Tube 9	10	8	Jun-03-2015	Jun-16-2015	SKW-5DOUT (MTT2)					█			
MAWK-TPL-009	Place Tube 9	10	3	Jun-24-2015	Jul-08-2015	SKW-5DOUT (MTT2)					█			
MAWK-OUTF-011	Placement Outfitting - Tube 11	10	8	Jul-09-2015	Jul-22-2015	SKW-5DOUT (MTT2)					█			
MAWK-TPL-011A	Temporarily Place Tube 11	5	3	Jul-30-2015	Aug-05-2015	SKW-5DOUT (MTT2)					█			
MAWK-OUTF-010	Placement Outfitting - Tube 10	10	8	Aug-06-2015	Aug-19-2015	SKW-5DOUT (MTT2)					█			
MAWK-TPL-010	Place Tube 10	5	3	Aug-27-2015	Sep-02-2015	SKW-5DOUT (MTT2)					█			
MAWK-TPL-011B	Place Tube 11	5	3	Sep-03-2015	Sep-10-2015	SKW-5DOUT (MTT2)					█			
Marine Backfill		320	131	Sep-02-2014	Nov-23-2015									
MAWK-LOCK-001	Locking Fill - Tube 1	10	75	Sep-02-2014	Sep-15-2014	SKW-5DOUT (MTT2)					█			
MAWK-ORDF-001	Ordinary Fill - Tube 1	8	77	Sep-16-2014	Sep-25-2014	SKW-5DOUT (MTT2)					█			
MAWK-LOCK-002	Locking Fill - Tube 2	10	65	Sep-30-2014	Oct-13-2014	SKW-5DOUT (MTT2)					█			
MAWK-ORDF-002	Ordinary Fill - Tube 2	23	65	Oct-14-2014	Nov-13-2014	SKW-5DOUT (MTT2)					█			
MAWK-LOCK-003	Locking Fill - Tube 3	4	74	Oct-28-2014	Oct-31-2014	SKW-5DOUT (MTT2)					█			
MAWK-ORDF-003	Ordinary Fill - Tube 3	33	65	Nov-14-2014	Jan-05-2015	SKW-5DOUT (MTT2)					█			
MAWK-LOCK-004	Locking Fill - Tube 4	4	82	Dec-04-2014	Dec-09-2014	SKW-5DOUT (MTT2)					█			
MAWK-ORDF-004	Ordinary Fill - Tube 4	33	65	Jan-06-2015	Feb-20-2015	SKW-5DOUT (MTT2)					█			
MAWK-LOCK-005	Locking Fill - Tube 5	4	101	Jan-19-2015	Jan-22-2015	SKW-5DOUT (MTT2)					█			
MAWK-ORDF-STL	One-Month Settlement Period	30	92	Feb-21-2015	Mar-22-2015	SKW-7DAY (MTT2)					█			
MAWK-ORDF-005	Ordinary Fill - Tube 5	28	154	Feb-23-2015	Apr-01-2015	SKW-5DOUT (MTT2)					█			
MAWK-ARMS-004	Armor Stone - Tube 4	14	225	Feb-23-2015	Mar-12-2015	SKW-5DOUT (MTT2)					█			
MAWK-LOCK-006	Locking Fill - Tube 6	4	82	Mar-03-2015	Mar-06-2015	SKW-5DOUT (MTT2)					█			
MAWK-ORDF-006	Ordinary Fill - Tube 6	13	154	Apr-02-2015	Apr-20-2015	SKW-5DOUT (MTT2)					█			
MAWK-ARMS-005	Armor Stone - Tube 5	20	211	Apr-02-2015	Apr-29-2015	SKW-5DOUT (MTT2)					█			
MAWK-LOCK-007	Locking Fill - Tube 7	4	63	Apr-14-2015	Apr-17-2015	SKW-5DOUT (MTT2)					█			
MAWK-ORDF-007	Ordinary Fill - Tube 7	13	154	Apr-21-2015	May-07-2015	SKW-5DOUT (MTT2)					█			
MAWK-ARMS-006	Armor Stone - Tube 6	20	211	Apr-30-2015	May-28-2015	SKW-5DOUT (MTT2)					█			
MAWK-ARMS-007	Armor Stone - Tube 7	20	211	May-29-2015	Jun-25-2015	SKW-5DOUT (MTT2)					█			

Activity ID	Activity Name	OD	TF	Start	Finish	Calendar	2011	2012	2013	2014	2015	2016	2017	2018
MAWK-LOCK-008	Locking Fill - Tube 8	4	39	Jun-03-2015	Jun-08-2015	SKW-5DOUT (MTT2)								Locking Fill - Tube 8
MAWK-ORDF-008	Ordinary Fill - Tube 8	13	133	Jun-09-2015	Jun-25-2015	SKW-5DOUT (MTT2)								Ordinary Fill - Tube 8
MAWK-ARMS-008	Armor Stone - Tube 8	20	211	Jun-26-2015	Jul-24-2015	SKW-5DOUT (MTT2)								Armor Stone - Tube 8
MAWK-LOCK-009	Locking Fill - Tube 9	4	25	Jul-09-2015	Jul-14-2015	SKW-5DOUT (MTT2)								Locking Fill - Tube 9
MAWK-ORDF-009	Ordinary Fill - Tube 9	18	121	Jul-15-2015	Aug-07-2015	SKW-5DOUT (MTT2)								Ordinary Fill - Tube 9
MAWK-LOCK-010	Locking Fill - Tube 10	4	32	Sep-03-2015	Sep-09-2015	SKW-5DOUT (MTT2)								Locking Fill - Tube 10
MAWK-ORDF-010	Ordinary Fill - Tube 10	5	99	Sep-10-2015	Sep-16-2015	SKW-5DOUT (MTT2)								Ordinary Fill - Tube 10
MAWK-LOCK-011	Locking Fill - Tube 11	4	3	Nov-11-2015	Nov-16-2015	SKW-5DOUT (MTT2)								Locking Fill - Tube 11
MAWK-ORDF-011	Ordinary Fill - Tube 11	5	56	Nov-17-2015	Nov-23-2015	SKW-5DOUT (MTT2)								Ordinary Fill - Tube 11
D6 - Portsmouth Approach		918	182	Apr-05-2012	Oct-12-2015									
Portsmouth Approach		918	182	Apr-05-2012	Oct-12-2015									
Utility Relocations		805	182	Aug-24-2012	Sep-24-2015									
Private Utility Relocations - Portsmouth Approach		467	36	Aug-24-2012	Dec-03-2013	SKW-7DAY (MTT2)								
PTS-UTIL-03.T4	Relocate Telephone (Sheet 3) - Level 3 [T4]	60	209	Aug-24-2012	Oct-22-2012	SKW-7DAY (MTT2)								Relocate Telephone (Sheet 3) - Level 3 [T4]
PTS-UTIL-06.T1	Relocate Telephone / FO Cable (Sheets 6, 7) - Verizon [T1, T2]	60	19	Dec-10-2012	Feb-07-2013	SKW-7DAY (MTT2)								Relocate Telephone / FO Cable (Sheets 6, 7) - Verizon [T1, T2]
PTS-UTIL-05.E3	Relocate Electric (Sheet 5) - Dominion VA Power [E3, E4, E5, E6]	60	35	Dec-10-2012	Feb-07-2013	SKW-7DAY (MTT2)								Relocate Electric (Sheet 5) - Dominion VA Power [E3, E4, E5, E6]
PTS-UTIL-05.T4	Relocate Telephone (Sheet 5) - Level 3 [T4, T5, T9]	60	36	Feb-08-2013	Apr-08-2013	SKW-7DAY (MTT2)								Relocate Telephone (Sheet 5) - Level 3 [T4, T5, T9]
PTS-UTIL-04.E1	Relocate Electric (Sheet 4) - Dominion VA Power [E1, E2]	60	15	Feb-28-2013	Apr-28-2013	SKW-7DAY (MTT2)								Relocate Electric (Sheet 4) - Dominion VA Power [E1, E2]
PTS-UTIL-04.T4	Relocate Telephone (Sheet 4) - Level 3 [T4]	60	15	Mar-06-2013	May-04-2013	SKW-7DAY (MTT2)								Relocate Telephone (Sheet 4) - Level 3 [T4]
PTS-UTIL-05.T3	Relocate Telephone / FO Cable (Sheet 5) - AT&T [T3]	90	36	Apr-09-2013	Jul-07-2013	SKW-7DAY (MTT2)								Relocate Telephone / FO Cable (Sheet 5) - AT&T [T3]
PTS-UTIL-04.T3	Relocate Telephone / FO Cable (Sheet 4) - AT&T [T3]	90	36	Sep-05-2013	Dec-03-2013	SKW-7DAY (MTT2)								Relocate Telephone / FO Cable (Sheet 4) - AT&T [T3]
SKW Utility Relocations - Portsmouth Approach		774	176	Sep-04-2012	Sep-24-2015	SKW-5DOUT (MTT2)								
PTS-UTIL-06.T12	Relocate VPA Telephone / FO Cable (Sheet 6) - SKW [T12]	66	55	Sep-04-2012	Dec-06-2012	SKW-5DOUT (MTT2)								Relocate VPA Telephone / FO Cable (Sheet 6) - SKW [T12]
PTS-UTIL-06.E12	Relocate VPA Electric (Sheet 6) - SKW [E12, E13]	60	61	Sep-04-2012	Nov-28-2012	SKW-5DOUT (MTT2)								Relocate VPA Electric (Sheet 6) - SKW [E12, E13]
PTS-UTIL-05G.T15	Protect VPA Telephone (Sheet 5G) - SKW [T15]	5	108	Sep-04-2012	Sep-10-2012	SKW-5DOUT (MTT2)								Protect VPA Telephone (Sheet 5G) - SKW [T15]
PTS-UTIL-06.S3	Abandon / Fill & Cap 8" San FM and Remove SMH #61-63 (Sheet 6) - SKW [S3]	10	111	Sep-04-2012	Sep-17-2012	SKW-5DOUT (MTT2)								Abandon / Fill & Cap 8" San FM and Remove SMH #61-63 (Sheet 6) - SKW [S3]
PTS-UTIL-05.W8	Install Temporary 8" Water Bypass (Sheet 5) - SKW [W8]	10	184	Sep-18-2012	Oct-01-2012	SKW-5DOUT (MTT2)								Install Temporary 8" Water Bypass (Sheet 5) - SKW [W8]
PTS-UTIL-03.T7	Relocate VDOT TC Duct (Sheet 4) - SKW [T7]	44	221	Oct-23-2012	Dec-26-2012	SKW-5DOUT (MTT2)								Relocate VDOT TC Duct (Sheet 4) - SKW [T7]
PTS-UTIL-05.E7	Relocate VDOT Electric (Sheet 5) - SKW [E7]	60	18	Dec-10-2012	Mar-06-2013	SKW-5DOUT (MTT2)								Relocate VDOT Electric (Sheet 5) - SKW [E7]
PTS-UTIL-05C.S2	Temporary Pump & Haul Facility / 4" San FM (Sheet 5C) - SKW [S2]	5	23	Dec-10-2012	Dec-14-2012	SKW-5DOUT (MTT2)								Temporary Pump & Haul Facility / 4" San FM (Sheet 5C) - SKW [S2]
PTS-UTIL-06.S2D	Remove 4" San FM (Sheet 6) - SKW [S2D]	13	23	Dec-17-2012	Jan-04-2013	SKW-5DOUT (MTT2)								Remove 4" San FM (Sheet 6) - SKW [S2D]
PTS-UTIL-06.S4	Remove 4" San FM (Sheet 6) - SKW [S4]	13	23	Jan-07-2013	Jan-23-2013	SKW-5DOUT (MTT2)								Remove 4" San FM (Sheet 6) - SKW [S4]
PTS-UTIL-05C.S2C	Abandon / Fill & Cap 4" San FM (Sheet 5C) - SKW [S2C]	5	31	Jan-07-2013	Jan-11-2013	SKW-5DOUT (MTT2)								Abandon / Fill & Cap 4" San FM (Sheet 5C) - SKW [S2C]
PTS-UTIL-04.E15	Relocate VDOT Electric (Sheet 4) - SKW [E15]	60	20	Feb-25-2013	May-17-2013	SKW-5DOUT (MTT2)								Relocate VDOT Electric (Sheet 4) - SKW [E15]
PTS-UTIL-05.T8	Relocate VPA Telephone / FO Cable & VDOT TC Duct (Sheet 5) - SKW [T8, T10]	44	18	Mar-07-2013	May-07-2013	SKW-5DOUT (MTT2)								Relocate VPA Telephone / FO Cable & VDOT TC Duct (Sheet 5) - SKW [T8, T10]
PTS-UTIL-07.S8A	Abandon / Fill & Cap 42" San FM (Sheet 7) - SKW [S8A]	20	128	May-01-2013	May-29-2013	SKW-5DOUT (MTT2)								Abandon / Fill & Cap 42" San FM (Sheet 7) - SKW [S8A]
PTS-UTIL-05.S1	Install Temporary 6" San FM Bypass (Sheet 5) - SKW [S1]	10	18	May-08-2013	May-21-2013	SKW-5DOUT (MTT2)								Install Temporary 6" San FM Bypass (Sheet 5) - SKW [S1]
PTS-UTIL-04.W5	Remove 30" Water (Sheet 4) - SKW [W5]	5	20	May-20-2013	May-24-2013	SKW-5DOUT (MTT2)								Remove 30" Water (Sheet 4) - SKW [W5]
PTS-UTIL-05.W6	Remove 30" Water (Sheet 5) - SKW [W6]	5	18	May-22-2013	May-29-2013	SKW-5DOUT (MTT2)								Remove 30" Water (Sheet 5) - SKW [W6]
PTS-UTIL-03.W1	Remove 4", 6", 8" Water (Sheet 3) - SKW [W1, W2, W3, W4]	10	106	May-28-2013	Jun-10-2013	SKW-5DOUT (MTT2)								Remove 4", 6", 8" Water (Sheet 3) - SKW [W1, W2, W3, W4]
PTS-UTIL-04.T7	Relocate VDOT TC Duct (Sheet 4) - SKW [T7]	44	112	May-28-2013	Jul-29-2013	SKW-5DOUT (MTT2)								Relocate VDOT TC Duct (Sheet 4) - SKW [T7]
PTS-UTIL-05F.T13	Protect Telephone (Sheet 5F) - SKW [T13]	61	176	Oct-24-2014	Jan-22-2015	SKW-5DOUT (MTT2)								Protect Telephone (Sheet 5F) - SKW [T13]
PTS-UTIL-05.W8B	Install 8" Water (Sheet 5) - SKW [W8B]	10	227	Oct-24-2014	Nov-06-2014	SKW-5DOUT (MTT2)								Install 8" Water (Sheet 5) - SKW [W8B]
PTS-UTIL-05.S2B	Install 4" San FM (Sheet 5) - SKW [S2B]	13	332	Nov-07-2014	Nov-25-2014	SKW-5DOUT (MTT2)								Install 4" San FM (Sheet 5) - SKW [S2B]
PTS-UTIL-05.S1B	Install 6" San FM (Sheet 5) - SKW [S1B]	5	332	Nov-26-2014	Dec-04-2014	SKW-5DOUT (MTT2)								Install 6" San FM (Sheet 5) - SKW [S1B]
PTS-UTIL-05.W7	Install 12" Water (Sheet 5) - SKW [W7]	171	176	Jan-23-2015	Sep-24-2015	SKW-5DOUT (MTT2)								Install 12" Water (Sheet 5) - SKW [W7]
Mobilization & Site Preparation		299	10	Apr-05-2012	Jun-10-2013	SKW-5DOUT (MTT2)								
PTS-MOBI-005	Mobilization & Site Preparation - Portsmouth Approach	65	151	Apr-05-2012	Jul-06-2012	SKW-5DOUT (MTT2)								Mobilization & Site Preparation - Portsmouth Approach
PTS-MOBI-015	Mobilize Heavy Equipment - Portsmouth Approach	25	10	May-06-2013	Jun-10-2013	SKW-5DOUT (MTT2)								Mobilize Heavy Equipment - Portsmouth Approach
Port Road Relocations		483	332	Mar-07-2013	Feb-02-2015	SKW-5DOUT (MTT2)								
PTS-SITE-015	Construct Relocation of Port Road "A"	20	42	Mar-07-2013	Apr-03-2013	SKW-5DOUT (MTT2)								Construct Relocation of Port Road "A"
PTS-SITE-020	Construct & Set Temporary Bridges (Port Road "A")	15	42	Apr-04-2013	Apr-24-2013	SKW-5DOUT (MTT2)								Construct & Set Temporary Bridges (Port Road "A")

Activity ID	Activity Name	OD	TF	Start	Finish	Calendar	2011	2012	2013	2014	2015	2016	2017	2018
PTS-SITE-025	Shift Traffic Back to Port Road "A" & Demo Temporary Road	10	42	Apr-25-2013	May-08-2013	SKW-5DOUT (MTT2)				█				
PTS-SITE-010	Construct Relocation of Overheight Truck Turnaround	40	106	Jun-11-2013	Aug-06-2013	SKW-5DOUT (MTT2)				█				
PTS-SITE-030	Construct Temporary Outbound Traffic Road	10	360	Oct-24-2014	Nov-06-2014	SKW-5DOUT (MTT2)								
PTS-SITE-070	Demo Temporary Overheight Truck Turnaround Road & Restore Area (Phase 7)	10	332	Jan-20-2015	Feb-02-2015	SKW-5DOUT (MTT2)								
Cut & Cover		387	154	Jun-11-2013	Dec-03-2014									
PTS-SOE-010	Drive SOE Sheet Piles - Portsmouth Cut & Cover	40	10	Jun-11-2013	Aug-06-2013	SKW-5DOUT (MTT2)				█				
PTS-EXCA-010	Structural Excavation - Portsmouth Cut & Cover	30	10	Jul-10-2013	Aug-20-2013	SKW-5DOUT (MTT2)				█				
PTS-PILE-010	Drive Concrete Piles - Portsmouth Cut & Cover	30	10	Sep-05-2013	Oct-16-2013	SKW-5DOUT (MTT2)				█				
PTS-TREM-010	Tremie Seal - Portsmouth Cut & Cover	25	10	Nov-07-2013	Dec-13-2013	SKW-5DOUT (MTT2)				█				
PTS-WPFG-025	Foundation Waterproofing - Portsmouth Cut & Cover	10	10	Dec-16-2013	Dec-30-2013	SKW-5DOUT (MTT2)				█				
PTS-WPFG-030	Spray Waterproofing - Portsmouth Cut & Cover	25	10	Apr-18-2014	May-22-2014	SKW-5DOUT (MTT2)				█				
PTS-BACK-020	Backfill (To EL. 0'-0") - Portsmouth Cut & Cover	30	10	May-23-2014	Jul-07-2014	SKW-5DOUT (MTT2)				█				
PTS-SOE-015	Remove Walers & Struts - Portsmouth Cut & Cover	30	10	Jul-08-2014	Aug-18-2014	SKW-5DOUT (MTT2)				█				
TINT-BALL-P05	Ballast Concrete - Portsmouth Cut & Cover	10	165	Sep-19-2014	Oct-02-2014	SKW-5DINT (MTT2)								
PTS-BACK-030	Backfill (To Final Grade) - Portsmouth Cut & Cover	25	176	Sep-19-2014	Oct-23-2014	SKW-5DOUT (MTT2)				█				
Area "A"		125	10	Jan-27-2014	Jul-23-2014	SKW-5DOUT (MTT2)								
PTS-SLAB-010	FRP Foundation (Area "A") - Portsmouth Cut & Cover	4	10	Jan-27-2014	Jan-30-2014	SKW-5DOUT (MTT2)				█				
PTS-WALL-010	FRP Walls (Area "A") - Portsmouth Cut & Cover	15	24	Jan-31-2014	Feb-21-2014	SKW-5DOUT (MTT2)				█				
PTS-SLAB-030	FRP Egress Stair 1 Slab - Portsmouth Cut & Cover	5	12	Mar-12-2014	Mar-18-2014	SKW-5DOUT (MTT2)				█				
PTS-WALL-040	FRP Egress Stair 1 Walls - Portsmouth Cut & Cover	20	12	Mar-19-2014	Apr-15-2014	SKW-5DOUT (MTT2)				█				
PTS-STAIR-005	FRP Egress Stair 1 - Portsmouth Tunnel Support Bldg	15	52	Apr-16-2014	May-06-2014	SKW-5DOUT (MTT2)				█				
PTS-ROOF-020	Erect Shoring (Area "A") - Portsmouth Cut & Cover	2	10	Jul-08-2014	Jul-09-2014	SKW-5DOUT (MTT2)				█				
PTS-ROOF-005	FRP Roof (Area "A") - Portsmouth Cut & Cover	10	10	Jul-10-2014	Jul-23-2014	SKW-5DOUT (MTT2)				█				
Egress Stairs		50	60	Feb-28-2014	May-08-2014	SKW-5DOUT (MTT2)								
PTS-SLAB-035	FRP Egress Stair 3 Slab - Portsmouth Cut & Cover	3	27	Feb-28-2014	Mar-04-2014	SKW-5DOUT (MTT2)				█				
PTS-WALL-045	FRP Egress Stair 3 Walls - Portsmouth Cut & Cover	15	27	Mar-05-2014	Mar-25-2014	SKW-5DOUT (MTT2)				█				
PTS-SLAB-040	FRP Egress Stair 4 Slab - Portsmouth Cut & Cover	3	10	Mar-25-2014	Mar-27-2014	SKW-5DOUT (MTT2)				█				
PTS-STAIR-015	FRP Egress Stair 3 - Portsmouth Tunnel Support Bldg	15	62	Mar-26-2014	Apr-15-2014	SKW-5DOUT (MTT2)				█				
PTS-WALL-050	FRP Egress Stair 4 Walls - Portsmouth Cut & Cover	15	10	Mar-28-2014	Apr-17-2014	SKW-5DOUT (MTT2)				█				
PTS-STAIR-020	FRP Egress Stair 4 - Portsmouth Cut & Cover	15	60	Apr-18-2014	May-08-2014	SKW-5DOUT (MTT2)				█				
Area "B"		235	121	Dec-31-2013	Dec-03-2014	SKW-5DOUT (MTT2)								
PTS-SLAB-015	FRP Foundation (Area "B") - Portsmouth Cut & Cover	4	10	Jan-31-2014	Feb-05-2014	SKW-5DOUT (MTT2)				█				
PTS-WALL-015	FRP Walls (Area "B") - Portsmouth Cut & Cover	15	12	Feb-06-2014	Feb-27-2014	SKW-5DOUT (MTT2)				█				
PTS-ROOF-025	Erect Shoring (Area "B") - Portsmouth Cut & Cover	2	18	Jul-10-2014	Jul-11-2014	SKW-5DOUT (MTT2)				█				
PTS-ROOF-010	FRP Roof (Area "B") - Portsmouth Cut & Cover	15	10	Jul-24-2014	Aug-13-2014	SKW-5DOUT (MTT2)				█				
Storm Water Pump Station Wet Well		235	121	Dec-31-2013	Dec-03-2014	SKW-5DOUT (MTT2)								
PTS-SLAB-025	FRP Wet Well Slab - Portsmouth SWPS	8	10	Dec-31-2013	Jan-10-2014	SKW-5DOUT (MTT2)				█				
PTS-WALL-025	FRP Wet Well Walls (Pour 1) - Portsmouth SWPS	10	10	Jan-13-2014	Jan-24-2014	SKW-5DOUT (MTT2)				█				
PTS-WALL-030	FRP Wet Well Walls (Pour 2) - Portsmouth SWPS	8	12	Feb-28-2014	Mar-11-2014	SKW-5DOUT (MTT2)				█				
PTS-ELEV-010	Erect Shoring - Operating Level Slab (Portsmouth SWPS)	2	15	Mar-12-2014	Mar-13-2014	SKW-5DOUT (MTT2)				█				
PTS-ELEV-005	FRP Operating Level Slab - Portsmouth SWPS	5	15	Mar-14-2014	Mar-20-2014	SKW-5DOUT (MTT2)				█				
PTS-WALL-035	FRP Wet Well Walls (Pour 3) - Portsmouth SWPS	15	15	Mar-21-2014	Apr-10-2014	SKW-5DOUT (MTT2)				█				
PTS-STAIR-010	FRP Egress Stair 2 - Portsmouth Tunnel Support Bldg	20	121	Nov-04-2014	Dec-03-2014	SKW-5DOUT (MTT2)				█				
Area "C"		157	118	Feb-06-2014	Sep-18-2014	SKW-5DOUT (MTT2)								
PTS-SLAB-020	FRP Foundation (Area "C") - Portsmouth Cut & Cover	12	10	Feb-06-2014	Feb-24-2014	SKW-5DOUT (MTT2)				█				
PTS-WALL-020	FRP Walls (Area "C") - Portsmouth Cut & Cover	20	10	Feb-25-2014	Mar-24-2014	SKW-5DOUT (MTT2)				█				
PTS-ROOF-030	Erect Shoring (Area "C") - Portsmouth Cut & Cover	5	136	Jul-14-2014	Jul-18-2014	SKW-5DOUT (MTT2)				█				
PTS-ROOF-015	FRP Roof (Area "C") - Portsmouth Cut & Cover	25	118	Aug-14-2014	Sep-18-2014	SKW-5DOUT (MTT2)				█				
Boat Section		370	176	Dec-04-2013	May-20-2015	SKW-5DOUT (MTT2)								
PTS-SOE-005	Drive SOE Sheet Piles - Portsmouth Boat Section	45	24	Dec-04-2013	Feb-06-2014	SKW-5DOUT (MTT2)				█				
PTS-EXCA-005	Structural Excavation - Portsmouth Boat Section	55	24	Feb-07-2014	Apr-25-2014	SKW-5DOUT (MTT2)				█				
PTS-PILE-005	Drive Concrete Piles - Portsmouth Boat Section	50	24	Apr-28-2014	Jul-08-2014	SKW-5DOUT (MTT2)				█				
PTS-TREM-005	Tremie Seal - Portsmouth Boat Section	10	24	May-19-2014	Jun-02-2014	SKW-5DOUT (MTT2)				█				

Activity ID	Activity Name	OD	TF	Start	Finish	Calendar	2011	2012	2013	2014	2015	2016	2017	2018
PTS-SLAB-005	FRP Foundation - Portsmouth Boat Section	55	24	Jun-03-2014	Aug-19-2014	SKW-5DOUT (MTT2)								FRP Foundation - Portsmouth Boat Section
PTS-WPFG-010	Foundation Waterproofing - Portsmouth Boat Section	35	24	Jun-03-2014	Jul-22-2014	SKW-5DOUT (MTT2)								Foundation Waterproofing - Portsmouth Boat Section
PTS-WALL-005	FRP Walls (Bottom) - Portsmouth Boat Section	60	24	Jun-17-2014	Sep-10-2014	SKW-5DOUT (MTT2)								FRP Walls (Bottom) - Portsmouth Boat Section
PTS-WPFG-015	Spray Waterproofing - Portsmouth Boat Section	60	24	Jun-24-2014	Sep-17-2014	SKW-5DOUT (MTT2)								Spray Waterproofing - Portsmouth Boat Section
PTS-BACK-015	Backfill (To EL. 0'-0") - Portsmouth Boat Section	60	24	Jul-01-2014	Sep-24-2014	SKW-5DOUT (MTT2)								Backfill (To EL. 0'-0") - Portsmouth Boat Section
PTS-SOE-020	Remove Walers & Struts - Portsmouth Boat Section	60	24	Sep-25-2014	Dec-19-2014	SKW-5DOUT (MTT2)								Remove Walers & Struts - Portsmouth Boat Section
PTS-WALL-065	FRP Walls (Top) - Portsmouth Boat Section	105	24	Oct-02-2014	Mar-04-2015	SKW-5DOUT (MTT2)								FRP Walls (Top) - Portsmouth Boat Section
PTS-BACK-040	Backfill (To Final Grade) - Portsmouth Boat Section	20	176	Mar-05-2015	Apr-01-2015	SKW-5DOUT (MTT2)								Backfill (To Final Grade) - Portsmouth Boat Section
PTS-SOE-025	Cut-Off / Pull SOE - Portsmouth Boat Section	35	176	Apr-02-2015	May-20-2015	SKW-5DOUT (MTT2)								Cut-Off / Pull SOE - Portsmouth Boat Section
Tunnel Support Building		55	24	Feb-04-2015	Apr-22-2015	SKW-5DOUT (MTT2)								
Portsmouth TSB Foundation		55	24	Feb-04-2015	Apr-22-2015	SKW-5DOUT (MTT2)								
PTS-WALL-055	FRP Foundation Walls - Portsmouth Tunnel Support Bldg	25	24	Feb-04-2015	Mar-11-2015	SKW-5DOUT (MTT2)								FRP Foundation Walls - Portsmouth Tunnel Support Bldg
PTS-BACK-025	Backfill - Portsmouth TSB Foundation Walls	20	24	Mar-26-2015	Apr-22-2015	SKW-5DOUT (MTT2)								Backfill - Portsmouth TSB Foundation Walls
Port, Access Road & Ramp Construction		78	332	Nov-07-2014	Mar-03-2015	SKW-5DOUT (MTT2)								
PTS-SITE-045	Construct Ramp "P" (Phase 5)	10	360	Nov-07-2014	Nov-20-2014	SKW-5DOUT (MTT2)								Construct Ramp "P" (Phase 5)
PTS-SITE-055	Construct Port Roads "A" and "B" (Phase 6)	20	332	Dec-05-2014	Jan-05-2015	SKW-5DOUT (MTT2)								Construct Port Roads "A" and "B" (Phase 6)
PTS-SITE-050	Construct Access Drive "P" (Phase 6)	10	332	Jan-06-2015	Jan-19-2015	SKW-5DOUT (MTT2)								Construct Access Drive "P" (Phase 6)
PTS-SITE-075	Construct US58 Crossover (Phase 8) & Shift Tunnel Traffic	20	332	Feb-03-2015	Mar-03-2015	SKW-5DOUT (MTT2)								Construct US58 Crossover (Phase 8) & Shift Tunnel Traffic
Sitework - Portsmouth Approach		176	176	Feb-03-2015	Oct-12-2015	SKW-5DOUT (MTT2)								
PTS-SITE-005	Install Fencing & Gates - Portsmouth Approach	5	347	Feb-03-2015	Feb-09-2015	SKW-5DOUT (MTT2)								Install Fencing & Gates - Portsmouth Approach
PTS-STORM-005	Storm Drainage - Portsmouth Approach	80	176	May-21-2015	Sep-14-2015	SKW-5DOUT (MTT2)								Storm Drainage - Portsmouth Approach
PTS-LTG-005	Install Site Lighting - Portsmouth Approach	20	176	Sep-15-2015	Oct-12-2015	SKW-5DOUT (MTT2)								Install Site Lighting - Portsmouth Approach
D5 - Norfolk Approach		1043	414	Apr-05-2012	Apr-04-2016									
Norfolk Approach		1043	414	Apr-05-2012	Apr-04-2016									
Utility Relocations		803	220	Jul-12-2012	Aug-10-2015									
Private Utility Relocations - Norfolk Approach		402	72	Jul-12-2012	Aug-17-2013	SKW-7DAY (MTT2)								
NFK-UTIL-14.T24	Relocate Telephone (Sheet 14) - AT&T [T24]	60	77	Jul-12-2012	Sep-09-2012	SKW-7DAY (MTT2)								Relocate Telephone (Sheet 14) - AT&T [T24]
NFK-UTIL-14.T23	Relocate Telephone (Sheet 14) - Level 3 [T23]	60	77	Sep-30-2012	Nov-28-2012	SKW-7DAY (MTT2)								Relocate Telephone (Sheet 14) - Level 3 [T23]
NFK-UTIL-14C.E30	Relocate Distribution Service (Sheet 14C) - Dominion VA Power [E30]	30	43	Nov-12-2012	Dec-11-2012	SKW-7DAY (MTT2)								Relocate Distribution Service (Sheet 14C) - Dominion VA Power [E30]
NFK-UTIL-12.T16	Relocate Telephone (Sheet 12) - Verizon / AT&T [T16, T17, T18]	60	72	Nov-21-2012	Jan-19-2013	SKW-7DAY (MTT2)								Relocate Telephone (Sheet 12) - Verizon / AT&T [T16, T17, T18]
NFK-UTIL-14C.G2	Relocate 1 1/4" - 2" Gas (Sheet 14C) - Virginia Natural Gas [G2, G4]	30	43	Nov-25-2012	Dec-24-2012	SKW-7DAY (MTT2)								Relocate 1 1/4" - 2" Gas (Sheet 14C) - Virginia Natural Gas [G2, G4]
NFK-UTIL-12.PP1	Relocate Power Poles (Sheet 12) - Dominion VA Power [PP#1, PP#6]	60	72	Feb-04-2013	Apr-04-2013	SKW-7DAY (MTT2)								Relocate Power Poles (Sheet 12) - Dominion VA Power [PP#1, PP#6]
NFK-UTIL-12.T24	Relocate Telephone (Sheet 12) - AT&T [T24]	60	72	Apr-20-2013	Jun-18-2013	SKW-7DAY (MTT2)								Relocate Telephone (Sheet 12) - AT&T [T24]
NFK-UTIL-12.T20	Relocate Telephone (Sheet 12) - Level 3 [T20]	60	72	Jun-19-2013	Aug-17-2013	SKW-7DAY (MTT2)								Relocate Telephone (Sheet 12) - Level 3 [T20]
SKW Utility Relocations - Norfolk Approach		753	213	Aug-17-2012	Aug-10-2015	SKW-5DOUT (MTT2)								
NFK-UTIL-13E.T22	Protect Telephone (Sheet 13E) - SKW [T22]	62	53	Aug-17-2012	Nov-13-2012	SKW-5DOUT (MTT2)								Protect Telephone (Sheet 13E) - SKW [T22]
NFK-UTIL-14B.TC1	Relocate VDOT Electric (Sheet 14B) - SKW [TC1, TC2]	60	788	Nov-12-2012	Feb-07-2013	SKW-5DOUT (MTT2)								Relocate VDOT Electric (Sheet 14B) - SKW [TC1, TC2]
NFK-UTIL-13E.E17	Relocate VDOT Electric (Sheet 13E) - SKW [E17]	60	216	Nov-14-2012	Feb-11-2013	SKW-5DOUT (MTT2)								Relocate VDOT Electric (Sheet 13E) - SKW [E17]
NFK-UTIL-14.E16	Relocate VDOT Electric (Sheet 14) - SKW [E16, E29]	60	227	Nov-29-2012	Feb-25-2013	SKW-5DOUT (MTT2)								Relocate VDOT Electric (Sheet 14) - SKW [E16, E29]
NFK-UTIL-12.S101	Install San FM from Exist Vent Bldg to Crash House (Sheets 12, 12D, 13, 13E) - SKW [S101]	75	144	Dec-11-2012	Mar-28-2013	SKW-5DOUT (MTT2)								Install San FM from Exist Vent Bldg to Crash House (Sheets 12, 12D, 13, 13E) - SKW [S101]
NFK-UTIL-14C.T26	Protect CATV (Sheet 14C) - SKW [T26]	6	29	Dec-26-2012	Jan-03-2013	SKW-5DOUT (MTT2)								Protect CATV (Sheet 14C) - SKW [T26]
NFK-UTIL-13E.S106	Provide Grinder Pump Station / 2" San FM (Sheet 13E) - SKW	15	144	Mar-29-2013	Apr-18-2013	SKW-5DOUT (MTT2)								Provide Grinder Pump Station / 2" San FM (Sheet 13E) - SKW
NFK-UTIL-13.W108B	Remove / Abandon 6" Water (Sheet 13) - SKW [W108B, W108C]	10	234	Mar-29-2013	Apr-11-2013	SKW-5DOUT (MTT2)								Remove / Abandon 6" Water (Sheet 13) - SKW [W108B, W108C]
NFK-UTIL-13.W109	Remove Water (Sheet 13) - SKW [W109]	5	234	Apr-12-2013	Apr-18-2013	SKW-5DOUT (MTT2)								Remove Water (Sheet 13) - SKW [W109]
NFK-UTIL-12.S100	Remove Drain Field & Abandon San FM (Sheet 12) - SKW	10	144	Apr-19-2013	May-02-2013	SKW-5DOUT (MTT2)								Remove Drain Field & Abandon San FM (Sheet 12) - SKW
NFK-UTIL-12.E26	Relocate DVP / VDOT Electric (Sheet 12) - SKW [E26, E27]	90	50	Aug-19-2013	Dec-26-2013	SKW-5DOUT (MTT2)								Relocate DVP / VDOT Electric (Sheet 12) - SKW [E26, E27]
NFK-UTIL-12.PP2	Relocate VDOT Power Poles (Sheet 12) - SKW [PP#2, PP#3, PP#4, PP#5]	90	50	Aug-19-2013	Dec-26-2013	SKW-5DOUT (MTT2)								Relocate VDOT Power Poles (Sheet 12) - SKW [PP#2, PP#3, PP#4, PP#5]
NFK-UTIL-12.W108	Abandon 6" Water (Sheet 12) - SKW [W108]	5	50	Dec-27-2013	Jan-03-2014	SKW-5DOUT (MTT2)								Abandon 6" Water (Sheet 12) - SKW [W108]
NFK-UTIL-12.W107	Provide Blind Flange for 6" Water (Sheet 12) - SKW [W107]	5	50	Jan-06-2014	Jan-10-2014	SKW-5DOUT (MTT2)								Provide Blind Flange for 6" Water (Sheet 12) - SKW [W107]
NFK-UTIL-12.W100	Install Water Service to Norfolk Tunnel Support Bldg (Sheets 12, 12D) - SKW [W100]	40	213	Jun-08-2015	Aug-03-2015	SKW-5DOUT (MTT2)								Install Water Service to Norfolk Tunnel Support Bldg (Sheets 12, 12D) - SKW [W100]
NFK-UTIL-12.W105	Abandon 6" Water (Sheet 12) - SKW [W105]	5	213	Aug-04-2015	Aug-10-2015	SKW-5DOUT (MTT2)								Abandon 6" Water (Sheet 12) - SKW [W105]
Mobilization & Site Preparation		377	75	Apr-05-2012	Sep-30-2013	SKW-5DOUT (MTT2)								
NFK-MOBI-005	Mobilization & Site Preparation - Norfolk Approach	65	357	Apr-05-2012	Jul-06-2012	SKW-5DOUT (MTT2)								Mobilization & Site Preparation - Norfolk Approach

Activity ID	Activity Name	OD	TF	Start	Finish	Calendar	2011	2012	2013	2014	2015	2016	2017	2018
NFK-WALL-055	FRP Walls (Top) - Norfolk Boat Section	90	50	Jan-15-2015	May-21-2015	SKW-5DOUT (MTT2)					■ FRP Walls (Top) - Norfolk Boat Section			
NFK-SOE-060	Cut-Off / Pull SOE - Norfolk Boat Section	25	185	Apr-17-2015	May-21-2015	SKW-5DOUT (MTT2)					■ Cut-Off / Pull SOE - Norfolk Boat Section			
NFK-BACK-050	Backfill (To Final Grade) - Norfolk Boat Section	20	185	May-08-2015	Jun-05-2015	SKW-5DOUT (MTT2)					■ Backfill (To Final Grade) - Norfolk Boat Section			
Closure Section		512	56	Dec-02-2013	Dec-09-2015	SKW-5DOUT (MTT2)								
NFK-SOE-015	Drive SOE Sheet Piles - Closure Section	15	378	Dec-02-2013	Dec-20-2013	SKW-5DOUT (MTT2)					■ Drive SOE Sheet Piles - Closure Section			
NFK-EXCA-015	Structural Excavation - Closure Section	5	378	Dec-23-2013	Dec-30-2013	SKW-5DOUT (MTT2)					■ Structural Excavation - Closure Section			
NFK-TREM-015	Tremie Seal - Closure Section	5	378	Dec-31-2013	Jan-07-2014	SKW-5DOUT (MTT2)					■ Tremie Seal - Closure Section			
NFK-PILE-015	Drive Concrete Piles - Closure Section	5	378	Dec-31-2013	Jan-07-2014	SKW-5DOUT (MTT2)					■ Drive Concrete Piles - Closure Section			
NFK-SOE-070	Cut-Off / Prep SOE Sheet Pile Wall for Tube 11	20	378	Jan-08-2014	Feb-04-2014	SKW-5DOUT (MTT2)					■ Cut-Off / Prep SOE Sheet Pile Wall for Tube 11			
NFK-SLAB-035	FRP Foundation - Closure Section	10	3	Sep-11-2015	Sep-24-2015	SKW-5DOUT (MTT2)					■ FRP Foundation - Closure Section			
NFK-WPFG-210	Foundation Waterproofing - Closure Section	5	3	Sep-11-2015	Sep-17-2015	SKW-5DOUT (MTT2)					■ Foundation Waterproofing - Closure Section			
NFK-WALL-040	FRP Walls - Closure Section	10	3	Sep-29-2015	Oct-12-2015	SKW-5DOUT (MTT2)					■ FRP Walls - Closure Section			
NFK-WPFG-215	Spray Waterproofing - Closure Section	2	3	Oct-09-2015	Oct-12-2015	SKW-5DOUT (MTT2)					■ Spray Waterproofing - Closure Section			
NFK-BACK-020	Backfill (To EL. 0'-0") - Closure Section	5	3	Oct-09-2015	Oct-15-2015	SKW-5DOUT (MTT2)					■ Backfill (To EL. 0'-0") - Closure Section			
NFK-SOE-055	Remove Struts - Closure Section	5	3	Oct-16-2015	Oct-22-2015	SKW-5DOUT (MTT2)					■ Remove Struts - Closure Section			
NFK-ROOF-030	Erect Shoring - Closure Section	3	3	Oct-23-2015	Oct-27-2015	SKW-5DOUT (MTT2)					■ Erect Shoring - Closure Section			
NFK-ROOF-015	FRP Roof - Closure Section	10	3	Oct-28-2015	Nov-10-2015	SKW-5DOUT (MTT2)					■ FRP Roof - Closure Section			
NFK-BACK-080	Backfill (To Final Grade) - Closure Section	10	56	Nov-24-2015	Dec-09-2015	SKW-5DOUT (MTT2)					■ Backfill (To Final Grade) - Closure Section			
Tunnel Support Building		98	75	Oct-07-2014	Feb-26-2015	SKW-5DOUT (MTT2)								
NFK-HNCH-005	FRP Haunches - Norfolk Tunnel Support Bldg	10	98	Oct-07-2014	Oct-20-2014	SKW-5DOUT (MTT2)					■ FRP Haunches - Norfolk Tunnel Support Bldg			
NFK-WALL-045	FRP Foundation Walls - Norfolk Tunnel Support Bldg	15	75	Feb-02-2015	Feb-23-2015	SKW-5DOUT (MTT2)					■ FRP Foundation Walls - Norfolk Tunnel Support Bldg			
NFK-BACK-025	Backfill - Norfolk TSB Foundation Walls	3	75	Feb-24-2015	Feb-26-2015	SKW-5DOUT (MTT2)					■ Backfill - Norfolk TSB Foundation Walls			
Norfolk Storm Water Pump Station		191	878	Oct-01-2013	Jun-24-2014	SKW-5DOUT (MTT2)								
NFK-SOE-100	Drive SOE Sheet Piles - Norfolk SWPS	20	565	Oct-01-2013	Oct-28-2013	SKW-5DOUT (MTT2)					■ Drive SOE Sheet Piles - Norfolk SWPS			
NFK-EXCA-100	Structural Excavation - New Norfolk SWPS	20	565	Oct-29-2013	Nov-25-2013	SKW-5DOUT (MTT2)					■ Structural Excavation - New Norfolk SWPS			
NFK-PILE-100	Drive Concrete Piles - Norfolk SWPS	20	565	Nov-26-2013	Dec-26-2013	SKW-5DOUT (MTT2)					■ Drive Concrete Piles - Norfolk SWPS			
NFK-TREM-100	Tremie Seal - New Norfolk SWPS	5	565	Dec-27-2013	Jan-03-2014	SKW-5DOUT (MTT2)					■ Tremie Seal - New Norfolk SWPS			
NFK-WPFG-100	Foundation Waterproofing - New Norfolk SWPS	3	565	Jan-06-2014	Jan-08-2014	SKW-5DOUT (MTT2)					■ Foundation Waterproofing - New Norfolk SWPS			
NFK-SLAB-100	FRP Foundation - New Norfolk SWPS	10	565	Jan-09-2014	Jan-22-2014	SKW-5DOUT (MTT2)					■ FRP Foundation - New Norfolk SWPS			
NFK-WALL-100	FRP Walls - Norfolk SWPS	20	565	Jan-23-2014	Feb-20-2014	SKW-5DOUT (MTT2)					■ FRP Walls - Norfolk SWPS			
NFK-ELEV-105	Erect Shoring - Slab at EL. 13'-0" - New Norfolk SWPS	5	565	Feb-21-2014	Feb-27-2014	SKW-5DOUT (MTT2)					■ Erect Shoring - Slab at EL. 13'-0" - New Norfolk SWPS			
NFK-ELEV-110	FRP Elevated Slab - Slab at EL. 13'-0" - New Norfolk SWPS	10	565	Feb-28-2014	Mar-13-2014	SKW-5DOUT (MTT2)					■ FRP Elevated Slab - Slab at EL. 13'-0" - New Norfolk SWPS			
NFK-MASN-100	Erect Bldg Walls & Brick Veneer - Norfolk SWPS	20	565	Mar-14-2014	Apr-10-2014	SKW-5DOUT (MTT2)					■ Erect Bldg Walls & Brick Veneer - Norfolk SWPS			
NFK-ROOF-100	Erect metal decking & FRP Roof Slab - Norfolk SWPS	10	565	Apr-11-2014	Apr-24-2014	SKW-5DOUT (MTT2)					■ Erect metal decking & FRP Roof Slab - Norfolk SWPS			
NFK-RFG-100	Install roofing - New Norfolk SWPS	5	565	Apr-25-2014	May-01-2014	SKW-5DOUT (MTT2)					■ Install roofing - New Norfolk SWPS			
NFK-MECH-100	Install SWPS Pumps - New Norfolk SWPS	5	590	Apr-25-2014	May-01-2014	SKW-5DINT (MTT2)					■ Install SWPS Pumps - New Norfolk SWPS			
NFK-DOOR-100	Install doors & louvers - Norfolk SWPS	2	565	May-02-2014	May-05-2014	SKW-5DOUT (MTT2)					■ Install doors & louvers - Norfolk SWPS			
NFK-PIPE-100	Install SWPS Piping - New Norfolk SWPS	5	590	May-02-2014	May-08-2014	SKW-5DINT (MTT2)					■ Install SWPS Piping - New Norfolk SWPS			
NFK-PTG-100	Painting - New Norfolk SWPS	10	565	May-06-2014	May-19-2014	SKW-5DINT (MTT2)					■ Painting - New Norfolk SWPS			
NFK-MECH-105	Test Piping - New Norfolk SWPS	2	590	May-09-2014	May-12-2014	SKW-5DINT (MTT2)					■ Test Piping - New Norfolk SWPS			
NFK-ELEC-100	Set Electrical equipment - New Norfolk SWPS	5	565	May-20-2014	May-27-2014	SKW-5DINT (MTT2)					■ Set Electrical equipment - New Norfolk SWPS			
NFK-ELEC-105	Install Lighting - Norfolk SWPS	5	565	May-20-2014	May-27-2014	SKW-5DINT (MTT2)					■ Install Lighting - Norfolk SWPS			
NFK-HAND-105	Install handrail - Norfolk SWPS	5	872	May-20-2014	May-27-2014	SKW-5DINT (MTT2)					■ Install handrail - Norfolk SWPS			
NFK-ELEC-110	Rough-in power & controls conduit - New Norfolk SWPS	5	565	May-28-2014	Jun-03-2014	SKW-5DINT (MTT2)					■ Rough-in power & controls conduit - New Norfolk SWPS			
NFK-ELEC-115	Pull & terminate power cable & controls wire - New Norfolk SWPS	10	565	Jun-04-2014	Jun-17-2014	SKW-5DINT (MTT2)					■ Pull & terminate power cable & controls wire - New Norfolk SWPS			
NFK-MECH-110	Test Pumps & appurtenances - New Norfolk SWPS	5	565	Jun-18-2014	Jun-24-2014	SKW-5DINT (MTT2)					■ Test Pumps & appurtenances - New Norfolk SWPS			
Access Road & Ramp Construction		659	185	Feb-14-2013	Sep-22-2015	SKW-5DOUT (MTT2)								
NFK-SITE-015	Construct Ramp "B" & Drainage Berms	20	214	Feb-14-2013	Mar-14-2013	SKW-5DOUT (MTT2)					■ Construct Ramp "B" & Drainage Berms			
NFK-SITE-040	Construct & Pave US58 Crossover (Phase 2)	20	295	Mar-20-2015	Apr-16-2015	SKW-5DOUT (MTT2)					■ Construct & Pave US58 Crossover (Phase 2)			
NFK-SITE-025	Construct Access Drive "N" (Phase 4A)	15	185	Jun-08-2015	Jun-26-2015	SKW-5DOUT (MTT2)					■ Construct Access Drive "N" (Phase 4A)			
NFK-SITE-035	Construct Ramp "N" (Phase 4A)	15	185	Jun-29-2015	Jul-20-2015	SKW-5DOUT (MTT2)					■ Construct Ramp "N" (Phase 4A)			
NFK-SITE-065	Construct Ramp "N" & Gore (Phase 4A)	20	185	Jun-29-2015	Jul-27-2015	SKW-5DOUT (MTT2)					■ Construct Ramp "N" & Gore (Phase 4A)			

Activity ID	Activity Name	OD	TF	Start	Finish	Calendar	2011	2012	2013	2014	2015	2016	2017	2018
NFK-ITS-005	Relocate Truck Inspection Station	20	185	Jun-29-2015	Jul-27-2015	SKW-5DOUT (MTT2)								Relocate Truck Inspection Station
NFK-SITE-030	Demo Temporary Access Road & Restore Area	8	227	Jun-29-2015	Jul-09-2015	SKW-5DOUT (MTT2)								Demo Temporary Access Road & Restore Area
NFK-SITE-085	Complete US58 Crossover (Phase 4C)	40	185	Jul-28-2015	Sep-22-2015	SKW-5DOUT (MTT2)								Complete US58 Crossover (Phase 4C)
NFK-SITE-075	Construct Ramp "N" / Olney Rd / US Hwy 58 (Phase 4B)	20	205	Jul-28-2015	Aug-24-2015	SKW-5DOUT (MTT2)								Construct Ramp "N" / Olney Rd / US Hwy 58 (Phase 4B)
Sitework - Norfolk Approach		186	116	Jul-10-2015	Apr-04-2016	SKW-5DOUT (MTT2)								
NFK-SITE-020	Construct Elizabeth River Trail	10	227	Jul-10-2015	Jul-23-2015	SKW-5DOUT (MTT2)								Construct Elizabeth River Trail
NFK-SITE-045	Install Fencing & Gates - Norfolk Approach	5	185	Sep-23-2015	Sep-29-2015	SKW-5DOUT (MTT2)								Install Fencing & Gates - Norfolk Approach
NFK-STORM-005	Storm Drainage - Norfolk Approach	60	56	Dec-10-2015	Mar-07-2016	SKW-5DOUT (MTT2)								Storm Drainage - Norfolk Approach
NFK-LTG-005	Install Site Lighting - Norfolk Approach	20	56	Mar-08-2016	Apr-04-2016	SKW-5DOUT (MTT2)								Install Site Lighting - Norfolk Approach
NFK-SITE-055	Re-Pave Crash House Parking Lot	6	70	Mar-08-2016	Mar-15-2016	SKW-5DOUT (MTT2)								Re-Pave Crash House Parking Lot
NFK-CSS-005	Context Sensitive Solutions - Trees (Norfolk Approach)	10	116	Mar-08-2016	Mar-21-2016	SKW-5DOUT (MTT2)								Context Sensitive Solutions - Trees (Norfolk Approach)
NFK-CSS-010	Context Sensitive Solutions - Groundcover (Norfolk Approach)	10	116	Mar-22-2016	Apr-04-2016	SKW-5DOUT (MTT2)								Context Sensitive Solutions - Groundcover (Norfolk Approach)
D4 - Tunnel Interior - Structural		265	61	Mar-05-2015	Mar-21-2016	SKW-5DINT (MTT2)								
Tunnel Interior Structural		265	61	Mar-05-2015	Mar-21-2016	SKW-5DINT (MTT2)								
Joint Dewatering		183	36	Mar-05-2015	Nov-19-2015	SKW-5DINT (MTT2)								
TINT-DWTR-P1	Dewater Joint P1	1	40	Mar-05-2015	Mar-05-2015	SKW-5DINT (MTT2)								Dewater Joint P1
TINT-DWTR-12	Dewater Joint 1-2	1	50	Mar-06-2015	Mar-06-2015	SKW-5DINT (MTT2)								Dewater Joint 1-2
TINT-DWTR-23	Dewater Joint 2-3	1	60	Mar-09-2015	Mar-09-2015	SKW-5DINT (MTT2)								Dewater Joint 2-3
TINT-DWTR-34	Dewater Joint 3-4	1	70	Mar-10-2015	Mar-10-2015	SKW-5DINT (MTT2)								Dewater Joint 3-4
TINT-DWTR-45	Dewater Joint 4-5	1	80	Mar-11-2015	Mar-11-2015	SKW-5DINT (MTT2)								Dewater Joint 4-5
TINT-DWTR-56	Dewater Joint 5-6	1	63	Apr-20-2015	Apr-20-2015	SKW-5DINT (MTT2)								Dewater Joint 5-6
TINT-DWTR-67	Dewater Joint 6-7	1	39	Jun-09-2015	Jun-09-2015	SKW-5DINT (MTT2)								Dewater Joint 6-7
TINT-DWTR-78	Dewater Joint 7-8	1	25	Jul-15-2015	Jul-15-2015	SKW-5DINT (MTT2)								Dewater Joint 7-8
TINT-DWTR-89	Dewater Joint 8-9	1	32	Sep-10-2015	Sep-10-2015	SKW-5DINT (MTT2)								Dewater Joint 8-9
TINT-DWTR-910	Dewater Joint 9-10	1	3	Nov-17-2015	Nov-17-2015	SKW-5DINT (MTT2)								Dewater Joint 9-10
TINT-DWTR-1011	Dewater Joint 10-11	1	13	Nov-18-2015	Nov-18-2015	SKW-5DINT (MTT2)								Dewater Joint 10-11
TINT-DWTR-N1	Dewater Joint N1	1	36	Nov-19-2015	Nov-19-2015	SKW-5DINT (MTT2)								Dewater Joint N1
Omega Seal Installation		213	16	Mar-06-2015	Jan-07-2016	SKW-5DINT (MTT2)								
TINT-OMSL-0.P1	Install Omega Seal - Joint P1	9	40	Mar-06-2015	Mar-18-2015	SKW-5DINT (MTT2)								Install Omega Seal - Joint P1
TINT-OMSL-1.P1	Test Omega Seal - Joint P1	2	40	Mar-19-2015	Mar-20-2015	SKW-5DINT (MTT2)								Test Omega Seal - Joint P1
TINT-OMSL-0.12	Install Omega Seal - Joint 1-2	9	40	Mar-23-2015	Apr-02-2015	SKW-5DINT (MTT2)								Install Omega Seal - Joint 1-2
TINT-OMSL-1.12	Test Omega Seal - Joint 1-2	2	40	Apr-03-2015	Apr-06-2015	SKW-5DINT (MTT2)								Test Omega Seal - Joint 1-2
TINT-OMSL-0.23	Install Omega Seal - Joint 2-3	9	40	Apr-07-2015	Apr-17-2015	SKW-5DINT (MTT2)								Install Omega Seal - Joint 2-3
TINT-OMSL-1.23	Test Omega Seal - Joint 2-3	2	40	Apr-20-2015	Apr-21-2015	SKW-5DINT (MTT2)								Test Omega Seal - Joint 2-3
TINT-OMSL-0.34	Install Omega Seal - Joint 3-4	9	40	Apr-22-2015	May-04-2015	SKW-5DINT (MTT2)								Install Omega Seal - Joint 3-4
TINT-OMSL-1.34	Test Omega Seal - Joint 3-4	2	40	May-05-2015	May-06-2015	SKW-5DINT (MTT2)								Test Omega Seal - Joint 3-4
TINT-OMSL-0.45	Install Omega Seal - Joint 4-5	9	40	May-07-2015	May-19-2015	SKW-5DINT (MTT2)								Install Omega Seal - Joint 4-5
TINT-OMSL-1.45	Test Omega Seal - Joint 4-5	2	40	May-20-2015	May-21-2015	SKW-5DINT (MTT2)								Test Omega Seal - Joint 4-5
TINT-OMSL-0.56	Install Omega Seal - Joint 5-6	9	40	May-22-2015	Jun-04-2015	SKW-5DINT (MTT2)								Install Omega Seal - Joint 5-6
TINT-OMSL-1.56	Test Omega Seal - Joint 5-6	2	40	Jun-05-2015	Jun-08-2015	SKW-5DINT (MTT2)								Test Omega Seal - Joint 5-6
TINT-OMSL-0.67	Install Omega Seal - Joint 6-7	9	39	Jun-10-2015	Jun-22-2015	SKW-5DINT (MTT2)								Install Omega Seal - Joint 6-7
TINT-OMSL-1.67	Test Omega Seal - Joint 6-7	2	39	Jun-23-2015	Jun-24-2015	SKW-5DINT (MTT2)								Test Omega Seal - Joint 6-7
TINT-OMSL-0.78	Install Omega Seal - Joint 7-8	9	25	Jul-16-2015	Jul-28-2015	SKW-5DINT (MTT2)								Install Omega Seal - Joint 7-8
TINT-OMSL-1.78	Test Omega Seal - Joint 7-8	2	25	Jul-29-2015	Jul-30-2015	SKW-5DINT (MTT2)								Test Omega Seal - Joint 7-8
TINT-OMSL-0.89	Install Omega Seal - Joint 8-9	9	32	Sep-11-2015	Sep-23-2015	SKW-5DINT (MTT2)								Install Omega Seal - Joint 8-9
TINT-OMSL-1.89	Test Omega Seal - Joint 8-9	2	32	Sep-24-2015	Sep-25-2015	SKW-5DINT (MTT2)								Test Omega Seal - Joint 8-9
TINT-OMSL-0.910	Install Omega Seal - Joint 9-10	9	3	Nov-18-2015	Dec-02-2015	SKW-5DINT (MTT2)								Install Omega Seal - Joint 9-10
TINT-OMSL-1.910	Test Omega Seal - Joint 9-10	2	3	Dec-03-2015	Dec-04-2015	SKW-5DINT (MTT2)								Test Omega Seal - Joint 9-10
TINT-OMSL-0.1011	Install Omega Seal - Joint 10-11	9	3	Dec-07-2015	Dec-17-2015	SKW-5DINT (MTT2)								Install Omega Seal - Joint 10-11
TINT-OMSL-1.1011	Test Omega Seal - Joint 10-11	2	3	Dec-18-2015	Dec-21-2015	SKW-5DINT (MTT2)								Test Omega Seal - Joint 10-11
TINT-OMSL-0.N1	Install Omega Seal - Joint N1	9	16	Dec-22-2015	Jan-05-2016	SKW-5DINT (MTT2)								Install Omega Seal - Joint N1
TINT-OMSL-1.N1	Test Omega Seal - Joint N1	2	16	Jan-06-2016	Jan-07-2016	SKW-5DINT (MTT2)								Test Omega Seal - Joint N1

Activity ID	Activity Name	OD	TF	Start	Finish	Calendar	2011	2012	2013	2014	2015	2016	2017	2018
Bulkhead Removal		208	16	Mar-23-2015	Jan-15-2016	SKW-5DINT (MTT2)								
TINT-BULK-P1	Remove Temporary Bulkheads - Joint P1	6	43	Mar-23-2015	Mar-30-2015	SKW-5DINT (MTT2)								Remove Temporary Bulkheads - Joint P1
TINT-BULK-12	Remove Temporary Bulkheads - Joint 1-2	6	46	Apr-07-2015	Apr-14-2015	SKW-5DINT (MTT2)								Remove Temporary Bulkheads - Joint 1-2
TINT-BULK-23	Remove Temporary Bulkheads - Joint 2-3	6	45	Apr-22-2015	Apr-29-2015	SKW-5DINT (MTT2)								Remove Temporary Bulkheads - Joint 2-3
TINT-BULK-34	Remove Temporary Bulkheads - Joint 3-4	6	44	May-07-2015	May-14-2015	SKW-5DINT (MTT2)								Remove Temporary Bulkheads - Joint 3-4
TINT-BULK-45	Remove Temporary Bulkheads - Joint 4-5	6	43	May-22-2015	Jun-01-2015	SKW-5DINT (MTT2)								Remove Temporary Bulkheads - Joint 4-5
TINT-BULK-56	Remove Temporary Bulkheads - Joint 5-6	6	42	Jun-09-2015	Jun-16-2015	SKW-5DINT (MTT2)								Remove Temporary Bulkheads - Joint 5-6
TINT-BULK-67	Remove Temporary Bulkheads - Joint 6-7	6	40	Jun-25-2015	Jul-02-2015	SKW-5DINT (MTT2)								Remove Temporary Bulkheads - Joint 6-7
TINT-BULK-78	Remove Temporary Bulkheads - Joint 7-8	6	25	Jul-31-2015	Aug-07-2015	SKW-5DINT (MTT2)								Remove Temporary Bulkheads - Joint 7-8
TINT-BULK-89	Remove Temporary Bulkheads - Joint 8-9	6	32	Sep-28-2015	Oct-05-2015	SKW-5DINT (MTT2)								Remove Temporary Bulkheads - Joint 8-9
TINT-BULK-910	Remove Temporary Bulkheads - Joint 9-10	6	4	Dec-07-2015	Dec-14-2015	SKW-5DINT (MTT2)								Remove Temporary Bulkheads - Joint 9-10
TINT-BULK-1011	Remove Temporary Bulkheads - Joint 10-11	6	3	Dec-22-2015	Dec-30-2015	SKW-5DINT (MTT2)								Remove Temporary Bulkheads - Joint 10-11
TINT-BULK-N1	Remove Temporary Bulkheads - Joint N1	6	16	Jan-08-2016	Jan-15-2016	SKW-5DINT (MTT2)								Remove Temporary Bulkheads - Joint N1
Shear Key / Joint Concrete		210	16	Apr-22-2015	Feb-19-2016	SKW-5DINT (MTT2)								
TINT-SKEY-P1	FRP Shear Key / Joint Concrete - Joint P1	14	43	Apr-22-2015	May-11-2015	SKW-5DINT (MTT2)								FRP Shear Key / Joint Concrete - Joint P1
TINT-SKEY-12	FRP Shear Key / Joint Concrete - Joint 1-2	10	43	May-12-2015	May-26-2015	SKW-5DINT (MTT2)								FRP Shear Key / Joint Concrete - Joint 1-2
TINT-SKEY-23	FRP Shear Key / Joint Concrete - Joint 2-3	10	43	May-27-2015	Jun-09-2015	SKW-5DINT (MTT2)								FRP Shear Key / Joint Concrete - Joint 2-3
TINT-SKEY-34	FRP Shear Key / Joint Concrete - Joint 3-4	10	43	Jun-10-2015	Jun-23-2015	SKW-5DINT (MTT2)								FRP Shear Key / Joint Concrete - Joint 3-4
TINT-SKEY-45	FRP Shear Key / Joint Concrete - Joint 4-5	10	43	Jun-24-2015	Jul-08-2015	SKW-5DINT (MTT2)								FRP Shear Key / Joint Concrete - Joint 4-5
TINT-SKEY-56	FRP Shear Key / Joint Concrete - Joint 5-6	10	42	Jul-10-2015	Jul-23-2015	SKW-5DINT (MTT2)								FRP Shear Key / Joint Concrete - Joint 5-6
TINT-SKEY-67	FRP Shear Key / Joint Concrete - Joint 6-7	10	40	Jul-28-2015	Aug-10-2015	SKW-5DINT (MTT2)								FRP Shear Key / Joint Concrete - Joint 6-7
TINT-SKEY-78	FRP Shear Key / Joint Concrete - Joint 7-8	10	25	Sep-01-2015	Sep-15-2015	SKW-5DINT (MTT2)								FRP Shear Key / Joint Concrete - Joint 7-8
TINT-SKEY-89	FRP Shear Key / Joint Concrete - Joint 8-9	10	32	Oct-28-2015	Nov-10-2015	SKW-5DINT (MTT2)								FRP Shear Key / Joint Concrete - Joint 8-9
TINT-SKEY-910	FRP Shear Key / Joint Concrete - Joint 9-10	10	4	Dec-23-2015	Jan-07-2016	SKW-5DINT (MTT2)								FRP Shear Key / Joint Concrete - Joint 9-10
TINT-SKEY-1011	FRP Shear Key / Joint Concrete - Joint 10-11	10	3	Jan-11-2016	Jan-22-2016	SKW-5DINT (MTT2)								FRP Shear Key / Joint Concrete - Joint 10-11
TINT-SKEY-N1	FRP Shear Key / Joint Concrete - Joint N1	14	16	Feb-01-2016	Feb-19-2016	SKW-5DINT (MTT2)								FRP Shear Key / Joint Concrete - Joint N1
Interior Tunnel Wall		203	16	May-12-2015	Mar-01-2016	SKW-5DINT (MTT2)								
TINT-WALL-P1	FRP Interior Tunnel Wall - Joint P1	7	128	May-12-2015	May-20-2015	SKW-5DINT (MTT2)								FRP Interior Tunnel Wall - Joint P1
TINT-WALL-12	FRP Interior Tunnel Wall - Joint 1-2	5	125	May-27-2015	Jun-02-2015	SKW-5DINT (MTT2)								FRP Interior Tunnel Wall - Joint 1-2
TINT-WALL-23	FRP Interior Tunnel Wall - Joint 2-3	5	120	Jun-10-2015	Jun-16-2015	SKW-5DINT (MTT2)								FRP Interior Tunnel Wall - Joint 2-3
TINT-WALL-34	FRP Interior Tunnel Wall - Joint 3-4	5	115	Jun-24-2015	Jun-30-2015	SKW-5DINT (MTT2)								FRP Interior Tunnel Wall - Joint 3-4
TINT-WALL-45	FRP Interior Tunnel Wall - Joint 4-5	5	110	Jul-09-2015	Jul-15-2015	SKW-5DINT (MTT2)								FRP Interior Tunnel Wall - Joint 4-5
TINT-WALL-56	FRP Interior Tunnel Wall - Joint 5-6	5	104	Jul-24-2015	Jul-30-2015	SKW-5DINT (MTT2)								FRP Interior Tunnel Wall - Joint 5-6
TINT-WALL-67	FRP Interior Tunnel Wall - Joint 6-7	5	97	Aug-11-2015	Aug-17-2015	SKW-5DINT (MTT2)								FRP Interior Tunnel Wall - Joint 6-7
TINT-WALL-78	FRP Interior Tunnel Wall - Joint 7-8	5	77	Sep-16-2015	Sep-22-2015	SKW-5DINT (MTT2)								FRP Interior Tunnel Wall - Joint 7-8
TINT-WALL-89	FRP Interior Tunnel Wall - Joint 8-9	5	42	Nov-11-2015	Nov-17-2015	SKW-5DINT (MTT2)								FRP Interior Tunnel Wall - Joint 8-9
TINT-WALL-910	FRP Interior Tunnel Wall - Joint 9-10	5	9	Jan-08-2016	Jan-14-2016	SKW-5DINT (MTT2)								FRP Interior Tunnel Wall - Joint 9-10
TINT-WALL-1011	FRP Interior Tunnel Wall - Joint 10-11	10	3	Jan-25-2016	Feb-05-2016	SKW-5DINT (MTT2)								FRP Interior Tunnel Wall - Joint 10-11
TINT-WALL-N1	FRP Interior Tunnel Wall - Joint N1	7	16	Feb-22-2016	Mar-01-2016	SKW-5DINT (MTT2)								FRP Interior Tunnel Wall - Joint N1
Ballast Concrete		201	17	Mar-31-2015	Jan-14-2016	SKW-5DINT (MTT2)								
Roadway Ballast Concrete		201	17	Mar-31-2015	Jan-14-2016	SKW-5DINT (MTT2)								
TINT-BALL-011	Ballast Concrete (Roadway) - Tube 1 Pours 1A, 1B & 2	4	43	Mar-31-2015	Apr-03-2015	SKW-5DINT (MTT2)								Ballast Concrete (Roadway) - Tube 1 Pours 1A, 1B & 2
TINT-DEMO-011	Remove Water Ballast Tanks (Roadway) - Tube 1	2	43	Apr-06-2015	Apr-07-2015	SKW-5DINT (MTT2)								Remove Water Ballast Tanks (Roadway) - Tube 1
TINT-BALL-013	Ballast Concrete (Roadway) - Tube 1 Pours 3A & 3B	4	43	Apr-08-2015	Apr-13-2015	SKW-5DINT (MTT2)								Ballast Concrete (Roadway) - Tube 1 Pours 3A & 3B
TINT-BALL-021	Ballast Concrete (Roadway) - Tube 2 Pours 1A, 1B & 2	4	46	Apr-15-2015	Apr-20-2015	SKW-5DINT (MTT2)								Ballast Concrete (Roadway) - Tube 2 Pours 1A, 1B & 2
TINT-DEMO-021	Remove Water Ballast Tanks (Roadway) - Tube 2	2	46	Apr-21-2015	Apr-22-2015	SKW-5DINT (MTT2)								Remove Water Ballast Tanks (Roadway) - Tube 2
TINT-BALL-023	Ballast Concrete (Roadway) - Tube 2 Pours 3A & 3B	4	46	Apr-23-2015	Apr-28-2015	SKW-5DINT (MTT2)								Ballast Concrete (Roadway) - Tube 2 Pours 3A & 3B
TINT-BALL-031	Ballast Concrete (Roadway) - Tube 3 Pours 1A, 1B & 2	4	45	Apr-30-2015	May-05-2015	SKW-5DINT (MTT2)								Ballast Concrete (Roadway) - Tube 3 Pours 1A, 1B & 2
TINT-DEMO-031	Remove Water Ballast Tanks (Roadway) - Tube 3	2	45	May-06-2015	May-07-2015	SKW-5DINT (MTT2)								Remove Water Ballast Tanks (Roadway) - Tube 3
TINT-BALL-033	Ballast Concrete (Roadway) - Tube 3 Pours 3A & 3B	4	45	May-08-2015	May-13-2015	SKW-5DINT (MTT2)								Ballast Concrete (Roadway) - Tube 3 Pours 3A & 3B
TINT-BALL-041	Ballast Concrete (Roadway) - Tube 4 Pours 1A, 1B & 2	4	44	May-15-2015	May-20-2015	SKW-5DINT (MTT2)								Ballast Concrete (Roadway) - Tube 4 Pours 1A, 1B & 2
TINT-DEMO-041	Remove Water Ballast Tanks (Roadway) - Tube 4	2	44	May-21-2015	May-22-2015	SKW-5DINT (MTT2)								Remove Water Ballast Tanks (Roadway) - Tube 4

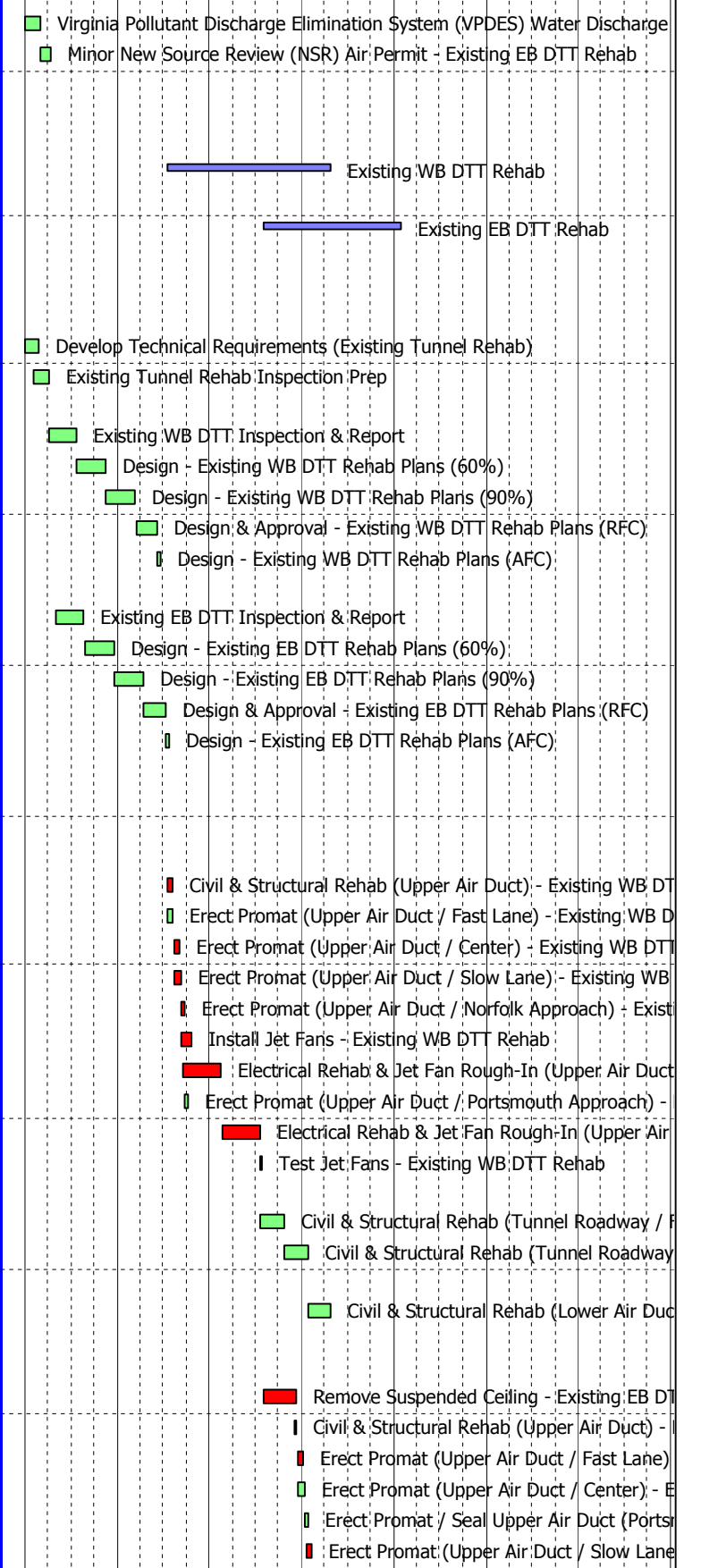
Activity ID	Activity Name	OD	TF	Start	Finish	Calendar	2011	2012	2013	2014	2015	2016	2017	2018
TINT-BALL-105	Ballast Concrete (Egress Corridor) - Tube 10 Pours 5A & 5B	2	4	Dec-21-2015	Dec-22-2015	SKW-5DINT (MTT2)								Ballast Concrete (Egress Corridor) - Tube 10 Pours 5A & 5B
TINT-BALL-114	Ballast Concrete (Egress Corridor) - Tube 11 Pour 4	2	3	Dec-31-2015	Jan-04-2016	SKW-5DINT (MTT2)								Ballast Concrete (Egress Corridor) - Tube 11 Pour 4
TINT-DEMO-112	Remove Water Ballast Tanks (Egress Corridor) - Tube 11	2	3	Jan-05-2016	Jan-06-2016	SKW-5DINT (MTT2)								Remove Water Ballast Tanks (Egress Corridor) - Tube 11
TINT-BALL-115	Ballast Concrete (Egress Corridor) - Tube 11 Pours 5A & 5B	2	3	Jan-07-2016	Jan-08-2016	SKW-5DINT (MTT2)								Ballast Concrete (Egress Corridor) - Tube 11 Pours 5A & 5B
High Walkway		126	136	May-27-2015	Nov-20-2015	SKW-5DINT (MTT2)								
TINT-HIGH-P10	High Walkway - Portsmouth Cut & Cover	8	47	May-27-2015	Jun-05-2015	SKW-5DINT (MTT2)								High Walkway - Portsmouth Cut & Cover
TINT-HIGH-001	High Walkway - Tube 1	8	47	Jun-08-2015	Jun-17-2015	SKW-5DINT (MTT2)								High Walkway - Tube 1
TINT-HIGH-002	High Walkway - Tube 2	8	47	Jun-18-2015	Jun-29-2015	SKW-5DINT (MTT2)								High Walkway - Tube 2
TINT-HIGH-003	High Walkway - Tube 3	8	47	Jun-30-2015	Jul-10-2015	SKW-5DINT (MTT2)								High Walkway - Tube 3
TINT-HIGH-004	High Walkway - Tube 4	8	47	Jul-13-2015	Jul-22-2015	SKW-5DINT (MTT2)								High Walkway - Tube 4
TINT-HIGH-005	High Walkway - Tube 5	8	46	Jul-24-2015	Aug-04-2015	SKW-5DINT (MTT2)								High Walkway - Tube 5
TINT-HIGH-006	High Walkway - Tube 6	8	42	Aug-11-2015	Aug-20-2015	SKW-5DINT (MTT2)								High Walkway - Tube 6
TINT-HIGH-007	High Walkway - Tube 7	8	25	Sep-16-2015	Sep-25-2015	SKW-5DINT (MTT2)								High Walkway - Tube 7
TINT-HIGH-008	High Walkway - Tube 8	8	25	Sep-28-2015	Oct-07-2015	SKW-5DINT (MTT2)								High Walkway - Tube 8
TINT-HIGH-009	High Walkway - Tube 9	8	25	Oct-08-2015	Oct-19-2015	SKW-5DINT (MTT2)								High Walkway - Tube 9
TINT-HIGH-010	High Walkway - Tube 10	8	25	Oct-20-2015	Oct-29-2015	SKW-5DINT (MTT2)								High Walkway - Tube 10
TINT-HIGH-011	High Walkway - Tube 11	8	25	Oct-30-2015	Nov-10-2015	SKW-5DINT (MTT2)								High Walkway - Tube 11
TINT-HIGH-N10	High Walkway - Norfolk Cut & Cover	8	136	Nov-11-2015	Nov-20-2015	SKW-5DINT (MTT2)								High Walkway - Norfolk Cut & Cover
Barrier Wall		127	136	Jun-03-2015	Dec-02-2015	SKW-5DINT (MTT2)								
TINT-BARR-P05	Barrier Wall - Portsmouth Boat Section	4	218	Jun-03-2015	Jun-08-2015	SKW-5DINT (MTT2)								Barrier Wall - Portsmouth Boat Section
TINT-BARR-P10	Barrier Wall - Portsmouth Cut & Cover	2	218	Jun-09-2015	Jun-10-2015	SKW-5DINT (MTT2)								Barrier Wall - Portsmouth Cut & Cover
TINT-BARR-001	Barrier Wall - Tube 1	2	213	Jun-18-2015	Jun-19-2015	SKW-5DINT (MTT2)								Barrier Wall - Tube 1
TINT-BARR-002	Barrier Wall - Tube 2	2	207	Jun-30-2015	Jul-01-2015	SKW-5DINT (MTT2)								Barrier Wall - Tube 2
TINT-BARR-003	Barrier Wall - Tube 3	2	201	Jul-13-2015	Jul-14-2015	SKW-5DINT (MTT2)								Barrier Wall - Tube 3
TINT-BARR-004	Barrier Wall - Tube 4	2	195	Jul-23-2015	Jul-24-2015	SKW-5DINT (MTT2)								Barrier Wall - Tube 4
TINT-BARR-005	Barrier Wall - Tube 5	2	188	Aug-05-2015	Aug-06-2015	SKW-5DINT (MTT2)								Barrier Wall - Tube 5
TINT-BARR-006	Barrier Wall - Tube 6	2	178	Aug-21-2015	Aug-24-2015	SKW-5DINT (MTT2)								Barrier Wall - Tube 6
TINT-BARR-007	Barrier Wall - Tube 7	2	155	Sep-28-2015	Sep-29-2015	SKW-5DINT (MTT2)								Barrier Wall - Tube 7
TINT-BARR-008	Barrier Wall - Tube 8	2	149	Oct-08-2015	Oct-09-2015	SKW-5DINT (MTT2)								Barrier Wall - Tube 8
TINT-BARR-009	Barrier Wall - Tube 9	2	143	Oct-20-2015	Oct-21-2015	SKW-5DINT (MTT2)								Barrier Wall - Tube 9
TINT-BARR-010	Barrier Wall - Tube 10	2	137	Oct-30-2015	Nov-02-2015	SKW-5DINT (MTT2)								Barrier Wall - Tube 10
TINT-BARR-011	Barrier Wall - Tube 11	2	131	Nov-11-2015	Nov-12-2015	SKW-5DINT (MTT2)								Barrier Wall - Tube 11
TINT-BARR-N10	Barrier Wall - Norfolk Cut & Cover	2	136	Nov-23-2015	Nov-24-2015	SKW-5DINT (MTT2)								Barrier Wall - Norfolk Cut & Cover
TINT-BARR-N05	Barrier Wall - Norfolk Boat Section	4	136	Nov-25-2015	Dec-02-2015	SKW-5DINT (MTT2)								Barrier Wall - Norfolk Boat Section
Egress Corridor Masonry Wall		203	51	May-22-2015	Mar-11-2016	SKW-5DINT (MTT2)								
TINT-MASN-P05	Erect Egress Corridor Masonry Wall - Portsmouth Cut & Cover	3	132	May-22-2015	May-27-2015	SKW-5DINT (MTT2)								Erect Egress Corridor Masonry Wall - Portsmouth Cut & Cover
TINT-MASN-001	Erect Egress Corridor Masonry Wall - Tube 1	5	187	Jun-04-2015	Jun-10-2015	SKW-5DINT (MTT2)								Erect Egress Corridor Masonry Wall - Tube 1
TINT-MASN-002	Erect Egress Corridor Masonry Wall - Tube 2	5	182	Jun-18-2015	Jun-24-2015	SKW-5DINT (MTT2)								Erect Egress Corridor Masonry Wall - Tube 2
TINT-MASN-003	Erect Egress Corridor Masonry Wall - Tube 3	5	177	Jul-02-2015	Jul-09-2015	SKW-5DINT (MTT2)								Erect Egress Corridor Masonry Wall - Tube 3
TINT-MASN-004	Erect Egress Corridor Masonry Wall - Tube 4	5	172	Jul-17-2015	Jul-23-2015	SKW-5DINT (MTT2)								Erect Egress Corridor Masonry Wall - Tube 4
TINT-MASN-005	Erect Egress Corridor Masonry Wall - Tube 5	5	166	Aug-03-2015	Aug-07-2015	SKW-5DINT (MTT2)								Erect Egress Corridor Masonry Wall - Tube 5
TINT-MASN-006	Erect Egress Corridor Masonry Wall - Tube 6	5	156	Aug-24-2015	Aug-28-2015	SKW-5DINT (MTT2)								Erect Egress Corridor Masonry Wall - Tube 6
TINT-MASN-007	Erect Egress Corridor Masonry Wall - Tube 7	5	139	Sep-24-2015	Sep-30-2015	SKW-5DINT (MTT2)								Erect Egress Corridor Masonry Wall - Tube 7
TINT-MASN-008	Erect Egress Corridor Masonry Wall - Tube 8	5	104	Nov-19-2015	Nov-25-2015	SKW-5DINT (MTT2)								Erect Egress Corridor Masonry Wall - Tube 8
TINT-MASN-009	Erect Egress Corridor Masonry Wall - Tube 9	5	71	Jan-18-2016	Jan-22-2016	SKW-5DINT (MTT2)								Erect Egress Corridor Masonry Wall - Tube 9
TINT-MASN-010	Erect Egress Corridor Masonry Wall - Tube 10	5	60	Feb-09-2016	Feb-16-2016	SKW-5DINT (MTT2)								Erect Egress Corridor Masonry Wall - Tube 10
TINT-MASN-011	Erect Egress Corridor Masonry Wall - Tube 11	5	49	Mar-03-2016	Mar-09-2016	SKW-5DINT (MTT2)								Erect Egress Corridor Masonry Wall - Tube 11
TINT-MASN-N05	Erect Egress Corridor Masonry Wall - Norfolk Cut & Cover	2	51	Mar-10-2016	Mar-11-2016	SKW-5DINT (MTT2)								Erect Egress Corridor Masonry Wall - Norfolk Cut & Cover
Egress Corridor Roof Slab		206	49	May-28-2015	Mar-21-2016	SKW-5DINT (MTT2)								
TINT-ROOF-P05	FRP Egress Corridor Roof Slab - Portsmouth Cut & Cover	7	132	May-28-2015	Jun-05-2015	SKW-5DINT (MTT2)								FRP Egress Corridor Roof Slab - Portsmouth Cut & Cover
TINT-ROOF-001	FRP Egress Corridor Roof Slab - Tube 1	4	197	Jun-11-2015	Jun-16-2015	SKW-5DINT (MTT2)								FRP Egress Corridor Roof Slab - Tube 1
TINT-ROOF-002	FRP Egress Corridor Roof Slab - Tube 2	4	191	Jun-25-2015	Jun-30-2015	SKW-5DINT (MTT2)								FRP Egress Corridor Roof Slab - Tube 2

Activity ID	Activity Name	OD	TF	Start	Finish	Calendar	2011	2012	2013	2014	2015	2016	2017	2018
TSYS-MECH-N05	Test SWPS Pumps - Norfolk SWPS	2	35	Apr-25-2016	Apr-26-2016	SKW-5DINT (MTT2)								Test SWPS Pumps - Norfolk
TSYS-HVAC-035	Test & Balance HVAC System	3	30	Apr-29-2016	May-03-2016	SKW-5DINT (MTT2)								Test & Balance HVAC System
TSYS-JETF-010	Test Jet Fans	20	3	May-13-2016	Jun-10-2016	SKW-5DINT (MTT2)								Test Jet Fans
TSYS-MECH-105	Flood Gate Commissioning & Leakage Test	10	3	May-27-2016	Jun-10-2016	SKW-5DOU (MTT2)								Flood Gate Commissioning
MLK Expressway Extension		1205	151	Jul-28-2011 A	May-12-2016									
Milestones		5	78	May-06-2016	May-12-2016	SKW-5DOU (MLK)								
MLK Expressway Extension		5	78	May-06-2016	May-12-2016	SKW-5DOU (MLK)								
VDOT-SAFE-TOLL	Substantial Completion / Safety Inspection - Tolling System	5	78	May-06-2016	May-12-2016	SKW-5DOU (MLK)								Substantial Completion / Sa
Permits		194	155	Jul-28-2011 A	Jul-06-2012	SKW-5DINT (MLK)								
All Permits		194	155	Jul-28-2011 A	Jul-06-2012	SKW-5DINT (MLK)								
Permits - MLK Expressway Extension		194	155	Jul-28-2011 A	Jul-06-2012	SKW-5DINT (MLK)								
PMT-MLK-010	Wetlands (Construction Phase) - MLK Expressway Extension	45	256	Jul-28-2011 A	Sep-30-2011	SKW-5DINT (MLK)								Wetlands (Construction Phase) - MLK Expressway Extension
PMT-MLK-030	UST Closure Report MLK Expressway Extension	90	64	Jan-04-2012	May-09-2012	SKW-5DINT (MLK)								UST Closure Report MLK Expressway Extension
PMT-MLK-020	Water Quality - VA Water Protection Permit (VA WPP) / Clean Water Act Section 401 - MLK Expressway Extension	130	155	Jan-04-2012	Jul-06-2012	SKW-5DINT (MLK)								Water Quality - VA Water Protection Permit (VA WPP) / Clean Water A
PMT-MLK-015	Cultural Resources - MLK Expressway Extension	120	165	Jan-04-2012	Jun-21-2012	SKW-5DINT (MLK)								Cultural Resources - MLK Expressway Extension
PMT-MLK-035	Demolition Permit - MLK Expressway Extension	20	179	Jan-04-2012	Jan-31-2012	SKW-5DINT (MLK)								Demolition Permit - MLK Expressway Extension
PMT-MLK-040	Storm Water Discharge / Storm Water Pollution Prevention Plan (SWPPP) - MLK Expressway Extension	20	183	Jan-04-2012	Jan-31-2012	SKW-5DINT (MLK)								Storm Water Discharge / Storm Water Pollution Prevention Plan (SWPPP) -
PMT-MLK-045	Storm Water Management and Erosion Control - MLK Expressway Extension	60	225	Jan-04-2012	Mar-28-2012	SKW-5DINT (MLK)								Storm Water Management and Erosion Control - MLK Expressway Extensi
PMT-MLK-060	Minor New Source Review (NSR) Air Permit - MLK Expressway Extension	30	255	Jan-04-2012	Feb-14-2012	SKW-5DINT (MLK)								Minor New Source Review (NSR) Air Permit - MLK Expressway Extension
PMT-MLK-050	Spill Prevention & Control Plan - MLK Expressway Extension	20	265	Jan-04-2012	Jan-31-2012	SKW-5DINT (MLK)								Spill Prevention & Control Plan - MLK Expressway Extension
PMT-MLK-055	Chesapeake Bay RPA / RMA - MLK Expressway Extension	20	265	Jan-04-2012	Jan-31-2012	SKW-5DINT (MLK)								Chesapeake Bay RPA / RMA - MLK Expressway Extension
PMT-MLK-100	Submit Virginia Storm Water Management Plan (VSMP) - MLK Expressway Extension	1	183	Feb-01-2012	Feb-01-2012	SKW-5DINT (MLK)								Submit Virginia Storm Water Management Plan (VSMP) - MLK Expressway E
Project Summary		1543	41	Jan-04-2012	Mar-25-2016	SKW-7DAY (MLK)								
MLK Expressway Extension		1543	41	Jan-04-2012	Mar-25-2016	SKW-7DAY (MLK)								
MLK Phase 1		1543	6	Jan-04-2012	Mar-25-2016	SKW-7DAY (MLK)								
SUMM-MLK-1.ROW	ROW Design & Acquisition - Phase 1	353	57	Jan-04-2012	Dec-21-2012	SKW-7DAY (MLK)								ROW Design & Acquisition - Phase 1
SUMM-MLK-1.UTIL	Utility Relocations - Phase 1	1281	6	Aug-16-2012	Feb-17-2016	SKW-7DAY (MLK)								Utility Relocations - Phase 1
SUMM-MLK.1-264E	I-264 Widening (Eastbound)	963	59	Jun-14-2013	Feb-01-2016	SKW-7DAY (MLK)								I-264 Widening (Eastbound)
SUMM-MLK.1-DES	Des Moines Avenue Widening	172	848	Jun-14-2013	Dec-02-2013	SKW-7DAY (MLK)								Des Moines Avenue Widening
SUMM-MLK.1-ML	Mainline - Phase 1 [STA 1000+00 to 1010+46]	375	216	Jun-24-2013	Jul-03-2014	SKW-7DAY (MLK)								Mainline - Phase 1 [STA 1000+00 to 1010+46]
SUMM-MLK.1-RSE	Ramp SE	621	317	Jul-18-2013	Mar-30-2015	SKW-7DAY (MLK)								Ramp SE
SUMM-MLK.1-REN	Ramp EN	719	233	Jul-26-2013	Jul-14-2015	SKW-7DAY (MLK)								Ramp EN
SUMM-MLK.1-264W	I-264 Widening (Westbound)	786	6	Jan-30-2014	Mar-25-2016	SKW-7DAY (MLK)								I-264 Widening (Westbound)
SUMM-MLK.1-NPBL	N&P Belt Line Widening	344	446	Jan-30-2014	Jan-08-2015	SKW-7DAY (MLK)								N&P Belt Line Widening
MLK Phase 2		1378	171	Jan-04-2012	Oct-12-2015	SKW-7DAY (MLK)								
SUMM-MLK-2.ROW	ROW Design & Acquisition - Phase 2	423	82	Jan-04-2012	Mar-01-2013	SKW-7DAY (MLK)								ROW Design & Acquisition - Phase 2
SUMM-MLK-2.UTIL	Utility Relocations - Phase 2	731	482	Aug-22-2012	Aug-22-2014	SKW-7DAY (MLK)								Utility Relocations - Phase 2
SUMM-MLK.2-ML	Mainline - Phase 2 [STA 1010+46 to 1029+66]	750	171	Sep-23-2013	Oct-12-2015	SKW-7DAY (MLK)								Mainline - Phase 2 [STA 1010+46
SUMM-MLK.2-RWN	Ramp WN	505	234	Feb-10-2014	Jun-29-2015	SKW-7DAY (MLK)								Ramp WN
SUMM-MLK.2-RSW	Ramp SW	386	317	Mar-05-2014	Mar-25-2015	SKW-7DAY (MLK)								Ramp SW
MLK Phase 3		1247	224	Jan-04-2012	Jun-03-2015	SKW-7DAY (MLK)								
SUMM-MLK-3.ROW	ROW Design & Acquisition - Phase 3	398	157	Jan-04-2012	Feb-04-2013	SKW-7DAY (MLK)								ROW Design & Acquisition - Phase 3
SUMM-MLK-3.UTIL	Utility Relocations - Phase 3	593	179	Feb-23-2013	Oct-08-2014	SKW-7DAY (MLK)								Utility Relocations - Phase 3
SUMM-MLK.3-ML	Mainline - Phase 3 [STA 1042+66 to 1055+00]	156	306	Oct-09-2014	Mar-13-2015	SKW-7DAY (MLK)								Mainline - Phase 3 [STA 1042+66 to 105
SUMM-MLK.3-RA	Ramp A	183	275	Oct-13-2014	Apr-13-2015	SKW-7DAY (MLK)								Ramp A
SUMM-MLK.3-RB	Ramp B	125	224	Jan-30-2015	Jun-03-2015	SKW-7DAY (MLK)								Ramp B
MLK Phase 4		1445	139	Jan-04-2012	Dec-18-2015	SKW-7DAY (MLK)								
SUMM-MLK-4.ROW	ROW Design & Acquisition - Phase 4	418	188	Jan-04-2012	Feb-24-2013	SKW-7DAY (MLK)								ROW Design & Acquisition - Phase 4
SUMM-MLK-4.UTIL	Utility Relocations - Phase 4	665	241	Aug-04-2012	May-30-2014	SKW-7DAY (MLK)								Utility Relocations - Phase 4
SUMM-MLK.4-RS	Ramp S	683	146	Jan-28-2014	Dec-11-2015	SKW-7DAY (MLK)								Ramp S
SUMM-MLK.4-RN	Ramp N	505	157	Jul-14-2014	Nov-30-2015	SKW-7DAY (MLK)								Ramp N
SUMM-MLK.4-ML	Mainline - Phase 4 [STA 1029+66 to 1042+66]	516	139	Jul-21-2014	Dec-18-2015	SKW-7DAY (MLK)								Mainline - Phase 4 [STA 1029+6

Activity ID	Activity Name	OD	TF	Start	Finish	Calendar	2011	2012	2013	2014	2015	2016	2017	2018
D15 - Design		350	473	Jan-04-2012	May-20-2013	SKW-5DINT (MLK)								
Design		350	473	Jan-04-2012	May-20-2013	SKW-5DINT (MLK)								
Civil		305	518	Jan-04-2012	Mar-18-2013	SKW-5DINT (MLK)								
DGN-PB.3-205	Design - MLK ROW Road Plans	140	4	Jan-04-2012	Jul-20-2012	SKW-5DINT (MLK)								
DGN-PB.3-405	Design - MLK Utility Relocation Plans (60%)	150	14	Jan-04-2012	Aug-03-2012	SKW-5DINT (MLK)								
DGN-PB.3-605	Design - MLK Traffic Management Plans	120	576	Jul-03-2012	Dec-21-2012	SKW-5DINT (MLK)								
DGN-PB.3-210	Design - MLK Final Road Plans	80	367	Jul-23-2012	Nov-12-2012	SKW-5DINT (MLK)								
DGN-PB.3-410	Design - MLK Utility Relocation Plans (90%)	85	14	Aug-06-2012	Dec-05-2012	SKW-5DINT (MLK)								
DGN-PB.3-215	Design & Approval - MLK Road Plans (RFC)	60	367	Nov-13-2012	Feb-08-2013	SKW-5DINT (MLK)								
DGN-PB.3-415	Design & Approval - MLK Utility Relocation Plans (RFC)	60	14	Dec-06-2012	Mar-04-2013	SKW-5DINT (MLK)								
DGN-PB.3-215.1	Design - MLK Road Plans (AFC)	10	367	Feb-11-2013	Feb-25-2013	SKW-5DINT (MLK)								
DGN-PB.3-415.1	Design - MLK Utility Relocation Plans (AFC)	10	14	Mar-05-2013	Mar-18-2013	SKW-5DINT (MLK)								
Geotechnical		145	232	Jan-04-2012	Jul-27-2012	SKW-5DINT (MLK)								
DGN-PB.4-205	Design & Approval - MLK Drilling and Lab	140	232	Jan-04-2012	Jul-20-2012	SKW-5DINT (MLK)								
DGN-PB.4-210	Design & Approval - MLK Final Geotech Report	100	232	Mar-08-2012	Jul-27-2012	SKW-5DINT (MLK)								
MLK Structures		350	27	Jan-04-2012	May-20-2013	SKW-5DINT (MLK)								
DGN-PB.9-005	Design - MLK Bridge Plans (60%)	140	27	Jan-04-2012	Jul-20-2012	SKW-5DINT (MLK)								
DGN-PB.9-010	Design - MLK Bridge Plans (90%)	140	27	Jul-23-2012	Feb-08-2013	SKW-5DINT (MLK)								
DGN-PB.9-015	Design & Approval - MLK Bridge Plans (RFC)	60	27	Feb-11-2013	May-06-2013	SKW-5DINT (MLK)								
DGN-PB.9-015.1	Design - MLK Bridge Plans (AFC)	10	27	May-07-2013	May-20-2013	SKW-5DINT (MLK)								
D17 - Right-of-Way		296	199	May-10-2012	Mar-01-2013	SKW-7DAY (MLK)								
MLK Expressway Extension		296	199	May-10-2012	Mar-01-2013	SKW-7DAY (MLK)								
ROW-MLK-014	ROW Parcel 014 - OMITTED	1	282	May-10-2012	May-10-2012	SKW-7DAY (MLK)								
ROW-MLK-064	ROW Parcel 064 - OMITTED	1	282	May-10-2012	May-10-2012	SKW-7DAY (MLK)								
MLK Phase 1		140	57	Aug-04-2012	Dec-21-2012	SKW-7DAY (MLK)								
ROW-MLK.1-006	Acquire ROW Parcel 006 - N&P Belt Line	60	6	Aug-04-2012	Oct-02-2012	SKW-7DAY (MLK)								
ROW-MLK.1-009	Acquire ROW Parcel 009 - P.R.H.A.	60	34	Aug-04-2012	Oct-02-2012	SKW-7DAY (MLK)								
ROW-MLK.1-010	Acquire ROW Parcel 010 - Mt. Olive Cemetery	60	34	Aug-09-2012	Oct-07-2012	SKW-7DAY (MLK)								
ROW-MLK.1-011	Acquire ROW Parcel 011 - Commonwealth of Virginia	60	34	Aug-14-2012	Oct-12-2012	SKW-7DAY (MLK)								
ROW-MLK.1-002	Acquire ROW Parcel 002 - Wanda R. Chambers	120	57	Aug-19-2012	Dec-16-2012	SKW-7DAY (MLK)								
ROW-MLK.1-003	Acquire ROW Parcel 003 - Ida Mae Howard Lynch	120	57	Aug-24-2012	Dec-21-2012	SKW-7DAY (MLK)								
ROW-MLK.1-005	Acquire ROW Parcel 005 - Unknown	60	82	Aug-29-2012	Oct-27-2012	SKW-7DAY (MLK)								
ROW-MLK.1-007	Acquire ROW Parcel 007 - City of Portsmouth	60	82	Sep-03-2012	Nov-01-2012	SKW-7DAY (MLK)								
ROW-MLK.1-068	Acquire ROW Parcel 068 - P.R.H.A.	60	82	Sep-08-2012	Nov-06-2012	SKW-7DAY (MLK)								
ROW-MLK.1-071	Acquire ROW Parcel 071 - Annie E. Whitehurst	60	82	Sep-13-2012	Nov-11-2012	SKW-7DAY (MLK)								
ROW-MLK.1-001	Acquire ROW Parcel 001 - Roosevelt T. Jr. & Boone Paula Harmon	60	82	Sep-18-2012	Nov-16-2012	SKW-7DAY (MLK)								
ROW-MLK.1-004	Acquire ROW Parcel 004 - City of Portsmouth	60	82	Sep-23-2012	Nov-21-2012	SKW-7DAY (MLK)								
ROW-MLK.1-008	Acquire ROW Parcel 008 - Commonwealth of Virginia	60	82	Sep-28-2012	Nov-26-2012	SKW-7DAY (MLK)								
MLK Phase 2		210	199	Aug-04-2012	Mar-01-2013	SKW-7DAY (MLK)								
ROW-MLK.2-024	Acquire ROW Parcel 024 - Unknown	180	82	Aug-04-2012	Jan-30-2013	SKW-7DAY (MLK)								
ROW-MLK.2-025	Acquire ROW Parcel 025 - Harley E. & Jane O. Pruitt	180	82	Aug-09-2012	Feb-04-2013	SKW-7DAY (MLK)								
ROW-MLK.2-027	Acquire ROW Parcel 027 - Eugene Percy Ricks Sr.	180	82	Aug-14-2012	Feb-09-2013	SKW-7DAY (MLK)								
ROW-MLK.2-028	Acquire ROW Parcel 028 - E. P. Ricks	180	82	Aug-19-2012	Feb-14-2013	SKW-7DAY (MLK)								
ROW-MLK.2-029	Acquire ROW Parcel 029 - Eugene Percy Ricks Sr.	180	82	Aug-24-2012	Feb-19-2013	SKW-7DAY (MLK)								
ROW-MLK.2-013	Acquire ROW Parcel 013 - Jonlis Properties, LLC.	150	82	Aug-29-2012	Jan-25-2013	SKW-7DAY (MLK)								
ROW-MLK.2-016	Acquire ROW Parcel 016 - Clifton E. & Elsie M. Rountree	150	82	Sep-03-2012	Jan-30-2013	SKW-7DAY (MLK)								
ROW-MLK.2-018	Acquire ROW Parcel 018 - Steven T. Williams	150	82	Sep-08-2012	Feb-04-2013	SKW-7DAY (MLK)								
ROW-MLK.2-019	Acquire ROW Parcel 019 - Leigh Morris & Eugenia E. Burton	150	82	Sep-13-2012	Feb-09-2013	SKW-7DAY (MLK)								
ROW-MLK.2-020	Acquire ROW Parcel 020 - Vera B. Garris	150	82	Sep-18-2012	Feb-14-2013	SKW-7DAY (MLK)								
ROW-MLK.2-021	Acquire ROW Parcel 021 - Herbert W. Brown	150	82	Sep-23-2012	Feb-19-2013	SKW-7DAY (MLK)								
ROW-MLK.2-069	Acquire ROW Parcel 069 - Rizzo N. Toxey	150	82	Sep-28-2012	Feb-24-2013	SKW-7DAY (MLK)								
ROW-MLK.2-070	Acquire ROW Parcel 070 - Herbert S. Humphrey Jr.	150	82	Oct-03-2012	Mar-01-2013	SKW-7DAY (MLK)								
ROW-MLK.2-012	Acquire ROW Parcel 012 - CSX	60	171	Oct-08-2012	Dec-06-2012	SKW-7DAY (MLK)								

Activity ID	Activity Name	OD	TF	Start	Finish	Calendar	2011	2012	2013	2014	2015	2016	2017	2018
ROW-MLK.2-015	Acquire ROW Parcel 015 - Tidewater Radio Show, Inc.	60	171	Oct-13-2012	Dec-11-2012	SKW-7DAY (MLK)			█					
ROW-MLK.2-017	Acquire ROW Parcel 017 - Associated Contracting Services, Inc.	60	171	Oct-18-2012	Dec-16-2012	SKW-7DAY (MLK)			█					
ROW-MLK.2-026	Acquire ROW Parcel 026 - Columbia Properties, LLC.	60	269	Oct-23-2012	Dec-21-2012	SKW-7DAY (MLK)			█					
MLK Phase 3		185	213	Aug-04-2012	Feb-04-2013	SKW-7DAY (MLK)								
ROW-MLK.3-051	Acquire ROW Parcel 051 - Souls Paradise Church of God in Christ	150	157	Aug-04-2012	Dec-31-2012	SKW-7DAY (MLK)			█					
ROW-MLK.3-055	Acquire ROW Parcel 055 - Portsmouth LLC.	150	157	Aug-09-2012	Jan-05-2013	SKW-7DAY (MLK)			█					
ROW-MLK.3-057	Acquire ROW Parcel 057 - Harmon Gloria Life Estate	150	157	Aug-14-2012	Jan-10-2013	SKW-7DAY (MLK)			█					
ROW-MLK.3-058	Acquire ROW Parcel 058 - Hajirah Abdus-Salaam	150	157	Aug-19-2012	Jan-15-2013	SKW-7DAY (MLK)			█					
ROW-MLK.3-059	Acquire ROW Parcel 059 - Shunita Vaughan-Murphy	150	157	Aug-24-2012	Jan-20-2013	SKW-7DAY (MLK)			█					
ROW-MLK.3-060	Acquire ROW Parcel 060 - Monique D. Anthony	150	157	Aug-29-2012	Jan-25-2013	SKW-7DAY (MLK)			█					
ROW-MLK.3-062	Acquire ROW Parcel 062 - Richard L. & Linda D. Dail	150	157	Sep-03-2012	Jan-30-2013	SKW-7DAY (MLK)			█					
ROW-MLK.3-063	Acquire ROW Parcel 063 - Donald & Valerie Pitt	150	157	Sep-08-2012	Feb-04-2013	SKW-7DAY (MLK)			█					
ROW-MLK.3-052	Acquire ROW Parcel 052 - Souls Paradise Church of God in Christ	60	263	Sep-13-2012	Nov-11-2012	SKW-7DAY (MLK)			█					
ROW-MLK.3-053	Acquire ROW Parcel 053 - Souls Paradise Church of God in Christ	60	263	Sep-18-2012	Nov-16-2012	SKW-7DAY (MLK)			█					
ROW-MLK.3-054	Acquire ROW Parcel 054 - Souls Paradise Church of God in Christ	60	263	Sep-23-2012	Nov-21-2012	SKW-7DAY (MLK)			█					
ROW-MLK.3-056	Acquire ROW Parcel 056 - Souls Paradise Church of God in Christ	60	263	Sep-28-2012	Nov-26-2012	SKW-7DAY (MLK)			█					
ROW-MLK.3-061	Acquire ROW Parcel 061 - Solomon J. & Barbara A. Johnson	60	263	Oct-03-2012	Dec-01-2012	SKW-7DAY (MLK)			█					
ROW-MLK.3-065	Acquire ROW Parcel 065 - City of Portsmouth	60	263	Oct-08-2012	Dec-06-2012	SKW-7DAY (MLK)			█					
ROW-MLK.3-066	Acquire ROW Parcel 066 - City of Portsmouth	60	263	Oct-13-2012	Dec-11-2012	SKW-7DAY (MLK)			█					
ROW-MLK.3-067	Acquire ROW Parcel 067 - Michael L. Vaughan	60	263	Oct-18-2012	Dec-16-2012	SKW-7DAY (MLK)			█					
MLK Phase 4		205	188	Aug-04-2012	Feb-24-2013	SKW-7DAY (MLK)								
ROW-MLK.4-031	Acquire ROW Parcel 031 - A & A Rental, LLC.	180	163	Aug-04-2012	Jan-30-2013	SKW-7DAY (MLK)			█					
ROW-MLK.4-032	Acquire ROW Parcel 032 - Britt Holding, LLC.	180	163	Aug-09-2012	Feb-04-2013	SKW-7DAY (MLK)			█					
ROW-MLK.4-033	Acquire ROW Parcel 033 - A & A Rental, LLC.	180	163	Aug-14-2012	Feb-09-2013	SKW-7DAY (MLK)			█					
ROW-MLK.4-034	Acquire ROW Parcel 034 - Britt Holding, LLC.	180	163	Aug-19-2012	Feb-14-2013	SKW-7DAY (MLK)			█					
ROW-MLK.4-045	Acquire ROW Parcel 045 - Joyce White & Arthur Tasby	180	188	Aug-24-2012	Feb-19-2013	SKW-7DAY (MLK)			█					
ROW-MLK.4-046	Acquire ROW Parcel 046 - Joyce White & Arthur Tasby	180	188	Aug-29-2012	Feb-24-2013	SKW-7DAY (MLK)			█					
ROW-MLK.4-039	Acquire ROW Parcel 039 - Albert D. White Jr.	150	188	Sep-03-2012	Jan-30-2013	SKW-7DAY (MLK)			█					
ROW-MLK.4-040	Acquire ROW Parcel 040 - Lawrence D. & Rosa P. Rose	150	188	Sep-08-2012	Feb-04-2013	SKW-7DAY (MLK)			█					
ROW-MLK.4-041	Acquire ROW Parcel 041 - Wilbert & Mary A Johnson	150	188	Sep-13-2012	Feb-09-2013	SKW-7DAY (MLK)			█					
ROW-MLK.4-043	Acquire ROW Parcel 043 - Michael L. Vaughan	150	188	Sep-18-2012	Feb-14-2013	SKW-7DAY (MLK)			█					
ROW-MLK.4-044	Acquire ROW Parcel 044 - Taratex Development Corp.	150	188	Sep-23-2012	Feb-19-2013	SKW-7DAY (MLK)			█					
ROW-MLK.4-037	Acquire ROW Parcel 037 - Lawrence Landscaping & Maintenance	90	188	Sep-28-2012	Dec-26-2012	SKW-7DAY (MLK)			█					
ROW-MLK.4-047	Acquire ROW Parcel 047 - Eva Elizabeth Smithhart & LJ A. Fary	90	188	Oct-03-2012	Dec-31-2012	SKW-7DAY (MLK)			█					
ROW-MLK.4-049	Acquire ROW Parcel 049 - John McGlynn	90	188	Oct-08-2012	Jan-05-2013	SKW-7DAY (MLK)			█					
ROW-MLK.4-030	Acquire ROW Parcel 030 - Portsmouth Machine & Welding Corp	60	188	Oct-13-2012	Dec-11-2012	SKW-7DAY (MLK)			█					
ROW-MLK.4-035	Acquire ROW Parcel 035 - Bethel Temple Church Trustees	60	188	Oct-18-2012	Dec-16-2012	SKW-7DAY (MLK)			█					
ROW-MLK.4-036	Acquire ROW Parcel 036 - Lawrence Landscaping & Maintenance	60	188	Oct-23-2012	Dec-21-2012	SKW-7DAY (MLK)			█					
ROW-MLK.4-038	Acquire ROW Parcel 038 - Lawrence Landscaping & Maintenance	60	188	Oct-28-2012	Dec-26-2012	SKW-7DAY (MLK)			█					
ROW-MLK.4-042	Acquire ROW Parcel 042 - Commonwealth of Virginia	60	188	Nov-02-2012	Dec-31-2012	SKW-7DAY (MLK)			█					
ROW-MLK.4-048	Acquire ROW Parcel 048 - Eva Elizabeth Smithhart & LJ A. Fary	60	188	Nov-07-2012	Jan-05-2013	SKW-7DAY (MLK)			█					
ROW-MLK.4-050	Acquire ROW Parcel 050 - Ann Williams & Maria P. Cross	60	188	Nov-12-2012	Jan-10-2013	SKW-7DAY (MLK)			█					
ROW-MLK.4-072	Acquire ROW Parcel 072 - Land O Sun II, LLC.	60	188	Nov-17-2012	Jan-15-2013	SKW-7DAY (MLK)			█					
ROW-MLK.4-073	Acquire ROW Parcel 073 - L & M Holding Company, LLC.	60	188	Nov-22-2012	Jan-20-2013	SKW-7DAY (MLK)			█					
D8 - MLK Expressway Extension		1115	174	Jan-03-2012	Apr-11-2016									
MLK Expressway Extension		1115	174	Jan-03-2012	Apr-11-2016									
MLK-SITE-HERC	Perform Phase I Environmental Site Assessment - HERC / Boiler Cleaning & Specialty Corp.	1	7	Jan-03-2012	Jan-03-2012	SKW-5DOUT (MLK)								Perform Phase I Environmental Site Assessment - HERC/ Boiler Cleaning &
MLK-SITE-MURRO	Perform Phase I Environmental Site Assessment - Murro Chemical	1	7	Jan-03-2012	Jan-03-2012	SKW-5DOUT (MLK)								Perform Phase I Environmental Site Assessment - Murro Chemical
MLK-SITE-000	Erect chain link fence - Potter's Field / Mount Calvary Cemetery	1	204	Jan-03-2012	Jan-03-2012	SKW-5DOUT (MLK)								Erect chain link fence - Potter's Field / Mount Calvary Cemetery
MLK-SURV-005	Pre-Construction Survey - Calvary Baptist Church	1	285	Jan-03-2012	Jan-03-2012	SKW-5DOUT (MLK)								Pre-Construction Survey - Calvary Baptist Church
MLK-MONI-005	Seismic Monitoring - Calvary Baptist Church	1	285	Jan-03-2012	Jan-03-2012	SKW-5DINT (MLK)								Seismic Monitoring - Calvary Baptist Church
GEN-STORM-MLK	Clean existing drainage facilities - MLK Expressway Extension (TR Section 1.6.1.I)	20	149	Aug-06-2012	Aug-31-2012	SKW-5DOUT (MLK)								█ Clean existing drainage facilities - MLK Expressway Extension (TR Se

Activity ID	Activity Name	OD	TF	Start	Finish	Calendar	2011	2012	2013	2014	2015	2016	2017	2018
Permits - Eastbound DTT Rehab														
PMT-EDTT-010	Virginia Pollutant Discharge Elimination System (VPDES) Water Discharge - Existing EB DTT Rehab	40	327	Jan-04-2012	Feb-29-2012	SKW-5DINT (DTT)								
PMT-EDTT-005	Minor New Source Review (NSR) Air Permit - Existing EB DTT Rehab	30	327	Mar-01-2012	Apr-11-2012	SKW-5DINT (DTT)								
Project Summary														
Existing Downtown Tunnels														
Existing Westbound DTT														
SUMM-WDTT-005	Existing WB DTT Rehab	644	242	Jul-20-2013	Apr-24-2015	SKW-7DAY (DTT)								
Existing Eastbound DTT														
SUMM-EDTT-005	Existing EB DTT Rehab	546	0	Aug-02-2014	Jan-29-2016	SKW-7DAY (DTT)								
D15 - Design														
Design														
Tunnel Rehab														
DGN-PB.8-005	Develop Technical Requirements (Existing Tunnel Rehab)	40	23	Jan-03-2012	Feb-28-2012	SKW-5DINT (DTT)								
DGN-PB.8-010	Existing Tunnel Rehab Inspection Prep	40	23	Feb-07-2012	Apr-03-2012	SKW-5DINT (DTT)								
Existing WB DTT Rehab														
DGN-PB.8-WDTT	Existing WB DTT Inspection & Report	80	23	Apr-04-2012	Jun-24-2013	SKW-5DINT (DTT)								
DGN-PB.8-W05	Design - Existing WB DTT Rehab Plans (60%)	80	23	Jul-27-2012	Nov-16-2012	SKW-5DINT (DTT)								
DGN-PB.8-W10	Design - Existing WB DTT Rehab Plans (90%)	80	23	Nov-19-2012	Mar-15-2013	SKW-5DINT (DTT)								
DGN-PB.8-W15	Design & Approval - Existing WB DTT Rehab Plans (RFC)	60	23	Mar-18-2013	Jun-10-2013	SKW-5DINT (DTT)								
DGN-PB.8-W15.1	Design - Existing WB DTT Rehab Plans (AFC)	10	23	Jun-11-2013	Jun-24-2013	SKW-5DINT (DTT)								
Existing EB DTT Rehab														
DGN-PB.8-EDTT	Existing EB DTT Inspection & Report	80	260	May-02-2012	Aug-23-2012	SKW-5DINT (DTT)								
DGN-PB.8-E05	Design - Existing EB DTT Rehab Plans (60%)	80	260	Aug-24-2012	Dec-18-2012	SKW-5DINT (DTT)								
DGN-PB.8-E10	Design - Existing EB DTT Rehab Plans (90%)	80	260	Dec-19-2012	Apr-12-2013	SKW-5DINT (DTT)								
DGN-PB.8-E15	Design & Approval - Existing EB DTT Rehab Plans (RFC)	60	260	Apr-15-2013	Jul-09-2013	SKW-5DINT (DTT)								
DGN-PB.8-E15.1	Design - Existing EB DTT Rehab Plans (AFC)	10	260	Jul-10-2013	Jul-23-2013	SKW-5DINT (DTT)								
D9 - Existing Tunnels Rehab														
Existing Downtown Tunnels														
Existing Westbound DTT														
Upper Air Duct														
WDTT-CIV-205	Civil & Structural Rehab (Upper Air Duct) - Existing WB DTT Rehab	8	2	Jul-20-2013	Aug-11-2013	SKW-TCLOSE (DTT)								
WDTT-PROM-205	Erect Promat (Upper Air Duct / Fast Lane) - Existing WB DTT Rehab	15	9	Jul-22-2013	Aug-09-2013	SKW-LCLOSE (DTT)								
WDTT-PROM-210	Erect Promat (Upper Air Duct / Center) - Existing WB DTT Rehab	8	2	Aug-17-2013	Sep-08-2013	SKW-TCLOSE (DTT)								
WDTT-PROM-215	Erect Promat (Upper Air Duct / Slow Lane) - Existing WB DTT Rehab	15	4	Aug-19-2013	Sep-09-2013	SKW-LCLOSE (DTT)								
WDTT-PROM-220	Erect Promat (Upper Air Duct / Norfolk Approach) - Existing WB DTT Rehab	4	2	Sep-14-2013	Sep-22-2013	SKW-TCLOSE (DTT)								
WDTT-JETF-205	Install Jet Fans - Existing WB DTT Rehab	12	2	Sep-14-2013	Oct-20-2013	SKW-TCLOSE (DTT)								
WDTT-ELEC-205	Electrical Rehab & Jet Fan Rough-In (Upper Air Duct / Fast Lane) - Existing WB DTT Rehab	107	0	Sep-16-2013	Feb-18-2014	SKW-LCLOSE (DTT)								
WDTT-PROM-225	Erect Promat (Upper Air Duct / Portsmouth Approach) - Existing WB DTT Rehab	4	6	Sep-28-2013	Oct-06-2013	SKW-TCLOSE (DTT)								
WDTT-ELEC-210	Electrical Rehab & Jet Fan Rough-In (Upper Air Duct / Slow Lane) - Existing WB DTT Rehab	106	0	Feb-19-2014	Jul-18-2014	SKW-LCLOSE (DTT)								
WDTT-TEST-005	Test Jet Fans - Existing WB DTT Rehab	4	0	Jul-19-2014	Jul-27-2014	SKW-TCLOSE (DTT)								
Tunnel Roadway														
WDTT-CIV-105	Civil & Structural Rehab (Tunnel Roadway / Fast Lane) - Existing WB DTT Rehab	68	167	Jul-21-2014	Oct-23-2014	SKW-LCLOSE (DTT)								
WDTT-CIV-110	Civil & Structural Rehab (Tunnel Roadway / Slow Lane) - Existing WB DTT Rehab	66	167	Oct-24-2014	Jan-29-2015	SKW-LCLOSE (DTT)								
Lower Air Duct														
WDTT-CIV-005	Civil & Structural Rehab (Lower Air Duct) - Existing WB DTT Rehab	60	167	Jan-30-2015	Apr-24-2015	SKW-5DINT (DTT)								
Existing Eastbound DTT														
Upper Air Duct														
EDTT-DEMO-205	Remove Suspended Ceiling - Existing EB DTT Rehab	40	0	Aug-02-2014	Dec-14-2014	SKW-TCLOSE (DTT)								
EDTT-CIV-205	Civil & Structural Rehab (Upper Air Duct) - Existing EB DTT Rehab	4	0	Dec-06-2014	Dec-14-2014	SKW-TCLOSE (DTT)								
EDTT-PROM-205	Erect Promat (Upper Air Duct / Fast Lane) - Existing EB DTT Rehab	15	3	Dec-15-2014	Jan-06-2015	SKW-LCLOSE (DTT)								
EDTT-PROM-210	Erect Promat (Upper Air Duct / Center) - Existing EB DTT Rehab	8	2	Dec-20-2014	Jan-11-2015	SKW-TCLOSE (DTT)								
EDTT-PROM-220	Erect Promat / Seal Upper Air Duct (Portsmouth) - Existing EB DTT Rehab	4	2	Jan-17-2015	Jan-25-2015	SKW-TCLOSE (DTT)								
EDTT-PROM-215	Erect Promat (Upper Air Duct / Slow Lane) - Existing EB DTT Rehab	15	3	Jan-21-2015	Feb-10-2015	SKW-LCLOSE (DTT)								



Activity ID	Activity Name	OD	TF	Start	Finish	Calendar	2011	2012	2013	2014	2015	2016	2017	2018
EDTT-PROM-225	Erect Promat / Seal Upper Air Duct (Norfolk) - Existing EB DTT Rehab	4	0	Feb-14-2015	Feb-22-2015	SKW-TCLOSE (DTT)								Erect Promat / Seal Upper Air Duct (Norfolk)
EDTT-JETF-205	Install Jet Fans - Existing EB DTT Rehab	12	2	Feb-14-2015	Mar-22-2015	SKW-TCLOSE (DTT)								Install Jet Fans - Existing EB DTT Rehab
EDTT-ELEC-205	Electrical Rehab & Jet Fan Rough-In (Upper Air Duct / Fast Lane) - Existing EB DTT Rehab	106	0	Feb-23-2015	Jul-22-2015	SKW-LCLOSE (DTT)								Electrical Rehab & Jet Fan Rough-In
EDTT-ELEC-210	Electrical Rehab & Jet Fan Rough-In (Upper Air Duct / Slow Lane) - Existing EB DTT Rehab	106	0	Jul-23-2015	Dec-22-2015	SKW-LCLOSE (DTT)								Electrical Rehab & Jet Fan Rough-In
EDTT-TEST-005	Test Jet Fans - Existing EB DTT Rehab	4	6	Dec-26-2015	Jan-03-2016	SKW-TCLOSE (DTT)								Test Jet Fans - Existing EB DTT Rehab
Tunnel Roadway		26	0	Dec-23-2015	Jan-29-2016	SKW-LCLOSE (DTT)								
EDTT-CIV-105	Civil & Structural Rehab (Tunnel Roadway / Fast Lane) - Existing EB DTT Rehab	13	0	Dec-23-2015	Jan-12-2016	SKW-LCLOSE (DTT)								Civil & Structural Rehab (Tunnel Roadway / Fast Lane)
EDTT-CIV-110	Civil & Structural Rehab (Tunnel Roadway / Slow Lane) - Existing EB DTT Rehab	13	0	Jan-13-2016	Jan-29-2016	SKW-LCLOSE (DTT)								Civil & Structural Rehab (Tunnel Roadway / Slow Lane)
Existing Downtown Tunnels Rehab		20	227	Aug-06-2012	Aug-31-2012	SKW-5DINT (DTT)								
Existing Downtown Tunnels		20	227	Aug-06-2012	Aug-31-2012	SKW-5DINT (DTT)								
GEN-STORM-DTT	Clean existing drainage facilities - Existing DTT Rehab (TR Section 1.6.1.1)	20	227	Aug-06-2012	Aug-31-2012	SKW-5DINT (DTT)								Clean existing drainage facilities - Existing DTT Rehab (TR Section 1.6.1.1)
Existing Midtown Tunnel		1523	1	Jan-03-2012	Nov-02-2017									
Permits		70	1082	Mar-01-2012	Jun-07-2012	SKW-5DINT (MTT1)								
All Permits		70	1082	Mar-01-2012	Jun-07-2012	SKW-5DINT (MTT1)								
Permits - Existing Midtown Tunnel Rehab		70	1082	Mar-01-2012	Jun-07-2012	SKW-5DINT (MTT1)								
PMT-MTT1-010	Virginia Pollutant Discharge Elimination System (VPDES) Water Discharge - Existing MTT Rehab	40	1082	Mar-01-2012	Apr-25-2012	SKW-5DINT (MTT1)								Virginia Pollutant Discharge Elimination System (VPDES) Water Discharge
PMT-MTT1-005	Minor New Source Review (NSR) Air Permit - Existing MTT Rehab	30	1082	Apr-26-2012	Jun-07-2012	SKW-5DINT (MTT1)								Minor New Source Review (NSR) Air Permit - Existing MTT Rehab
Project Summary		417	1	Sep-12-2016	Nov-02-2017	SKW-7DAY (MTT1)								
Existing Midtown Tunnel		417	1	Sep-12-2016	Nov-02-2017	SKW-7DAY (MTT1)								
SUMM-MTT1-005	Existing MTT Rehab	417	1	Sep-12-2016	Nov-02-2017	SKW-7DAY (MTT1)								Existing MTT Rehab
D15 - Design		414	778	Jan-04-2012	Aug-20-2013	SKW-5DINT (MTT1)								
Design		414	778	Jan-04-2012	Aug-20-2013	SKW-5DINT (MTT1)								
Geotechnical		40	17	Jan-04-2012	Feb-29-2012	SKW-5DINT (MTT1)								
DGN-PB.4-005	Design - Finalize Monitoring Plan	40	17	Jan-04-2012	Feb-29-2012	SKW-5DINT (MTT1)								Design - Finalize Monitoring Plan
Tunnel Rehab		310	778	May-31-2012	Aug-20-2013	SKW-5DINT (MTT1)								
DGN-PB.8-MTT1	Existing MTT Inspection & Report	80	643	May-31-2012	Sep-21-2012	SKW-5DINT (MTT1)								Existing MTT Inspection & Report
DGN-PB.8-205	Design - Existing MTT Rehab Plans (60%)	80	643	Sep-24-2012	Jan-17-2013	SKW-5DINT (MTT1)								Design - Existing MTT Rehab Plans (60%)
DGN-PB.8-210	Design - Existing MTT Rehab Plans (90%)	80	643	Jan-18-2013	May-10-2013	SKW-5DINT (MTT1)								Design - Existing MTT Rehab Plans (90%)
DGN-PB.8-215	Design & Approval - Existing MTT Rehab Plans (RFC)	60	643	May-13-2013	Aug-06-2013	SKW-5DINT (MTT1)								Design & Approval - Existing MTT Rehab Plans (RFC)
DGN-PB.8-215.1	Design - Existing MTT Rehab Plans (AFC)	10	778	Aug-07-2013	Aug-20-2013	SKW-5DINT (MTT1)								Design - Existing MTT Rehab Plans (AFC)
Temporary SKW Facilities		165	17	Mar-01-2012	Oct-17-2012									
Temporary Structure / Facilities		165	17	Mar-01-2012	Oct-17-2012									
TEMP-MTT1-005	Install Monitoring System - Existing Midtown Tunnel	15	17	Mar-01-2012	Mar-21-2012	SKW-5DINT (MTT1)								Install Monitoring System - Existing Midtown Tunnel
TEMP-MTT1-010	Monitor Existing Midtown Tunnel	210	23	Mar-22-2012	Oct-17-2012	SKW-7DAY (MTT1)								Monitor Existing Midtown Tunnel
D9 - Existing Tunnels Rehab		294	1	Sep-17-2016	Nov-02-2017									
Existing Midtown Tunnel		294	1	Sep-17-2016	Nov-02-2017									
Upper Air Duct		245	45	Sep-17-2016	Aug-27-2017									
MTT1-DEMO-205	Remove Suspended Ceiling - Existing MTT Rehab	20	0	Sep-17-2016	Nov-20-2016	SKW-TCLOSE (MTT1)								Remove Suspended Ceiling
MTT1-CIV-205	Civil & Structural Rehab (Upper Air Duct) - Existing MTT Rehab	4	0	Nov-12-2016	Nov-20-2016	SKW-TCLOSE (MTT1)								Civil & Structural Rehab (Upper Air Duct)
MTT1-PROM-205	Erect Promat (Upper Air Duct / Fast Lane) - Existing MTT Rehab	30	1	Nov-21-2016	Jan-05-2017	SKW-LCLOSE (MTT1)								Erect Promat (Upper Air Duct / Fast Lane)
MTT1-PROM-210	Erect Promat (Upper Air Duct / Center) - Existing MTT Rehab	12	0	Nov-26-2016	Jan-15-2017	SKW-TCLOSE (MTT1)								Erect Promat (Upper Air Duct / Center)
MTT1-PROM-215	Erect Promat (Upper Air Duct / Slow Lane) - Existing MTT Rehab	30	1	Dec-21-2016	Feb-02-2017	SKW-LCLOSE (MTT1)								Erect Promat (Upper Air Duct / Slow Lane)
MTT1-PROM-220	Erect Promat / Seal Upper Air Duct (Portsmouth) - Existing MTT Rehab	2	0	Jan-21-2017	Jan-22-2017	SKW-TCLOSE (MTT1)								Erect Promat / Seal Upper Air Duct (Portsmouth)
MTT1-PROM-225	Erect Promat / Seal Upper Air Duct (Norfolk) - Existing MTT Rehab	2	0	Feb-04-2017	Feb-05-2017	SKW-TCLOSE (MTT1)								Erect Promat / Seal Upper Air Duct (Norfolk)
MTT1-JETF-205	Install Jet Fans - Existing MTT Rehab	6	0	Feb-04-2017	Feb-19-2017	SKW-TCLOSE (MTT1)								Install Jet Fans - Existing MTT Rehab
MTT1-ELEC-205	Electrical Rehab & Jet Fan Rough-In (Upper Air Duct / Fast Lane) - Existing MTT Rehab	70	1	Feb-06-2017	May-15-2017	SKW-LCLOSE (MTT1)								Electrical Rehab & Jet Fan Rough-In (Upper Air Duct / Fast Lane)
MTT1-ELEC-210	Electrical Rehab & Jet Fan Rough-In (Upper Air Duct / Slow Lane) - Existing MTT Rehab	70	1	May-16-2017	Aug-23-2017	SKW-LCLOSE (MTT1)								Electrical Rehab & Jet Fan Rough-In (Upper Air Duct / Slow Lane)
MTT1-TEST-005	Test Jet Fans - Existing MTT Rehab	2	18	Aug-26-2017	Aug-27-2017	SKW-TCLOSE (MTT1)								Test Jet Fans - Existing MTT Rehab
Tunnel Roadway		50	1	Aug-24-2017	Nov-02-2017	SKW-LCLOSE (MTT1)								
MTT1-CIV-105	Civil & Structural Rehab (Tunnel Roadway / Fast Lane) - Existing MTT Rehab	25	1	Aug-24-2017	Sep-28-2017	SKW-LCLOSE (MTT1)								Civil & Structural Rehab (Tunnel Roadway / Fast Lane)
MTT1-CIV-110	Civil & Structural Rehab (Tunnel Roadway / Slow Lane) - Existing MTT Rehab	25	1	Sep-29-2017	Nov-02-2017	SKW-LCLOSE (MTT1)								Civil & Structural Rehab (Tunnel Roadway / Slow Lane)
Lower Air Duct		16	176	Nov-21-2016	Dec-14-2016	SKW-5DINT (MTT1)								
MTT1-CIV-005	Civil & Structural Rehab (Lower Air Duct) - Existing MTT Rehab	16	176	Nov-21-2016	Dec-14-2016	SKW-5DINT (MTT1)								Civil & Structural Rehab (Lower Air Duct)

Activity ID	Activity Name	OD	TF	Start	Finish	Calendar	2011	2012	2013	2014	2015	2016	2017	2018	
Existing Midtown Tunnel Rehab															
Existing Midtown Tunnel															
MTT1-SURV-005	Conduct Existing MTT Baseline Survey (Summer Period)	10	210	Jan-03-2012	Jan-16-2012	SKW-5DOUT (MTT1)									
MTT1-SURV-105	Conduct Existing MTT Baseline Survey (Winter Period)	10	210	Jan-03-2012	Jan-16-2012	SKW-5DOUT (MTT1)									
GEN-STORM-MTT1	Clean existing drainage facilities - Existing MTT Rehab (TR Section 1.6.1.I)	20	1022	Aug-06-2012	Aug-31-2012	SKW-5DOUT (MTT1)									
Project Wide Work															
D15 - Design															
Design															
Tunnel Systems															
DGN-ITS-PROJ	Design & Mgmt - Intelligent Transportation System (ITS)	230	37	Jan-04-2012	Nov-28-2012	SKW-5DINT (MTT2)									
Tolling Work (By ERC Subcontractor)															
Tolling Work - Phase 2															
TOLL-MTT2-005	Pull & Test Tolling fiber optic cable	15	43	Dec-28-2015	Jan-18-2016	SKW-5DOUT (MTT2)									
Project Wide Work															
Project Wide Work															
GEN-MTG-UTIL	Utility Information Meeting (TR Section 3.7.1.A)	1	187	Jan-03-2012	Jan-03-2012	SKW-5DINT (MTT2)									
GEN-MTG-FC	Post-Financial Close Meeting (TR Section 3.2.8.A)	1	223	Jan-03-2012	Jan-03-2012	SKW-5DINT (MTT2)									
GEN-MTG-PRE	Pre-Construction Meeting (TR Section 3.2.8.B)	1	74	Aug-06-2012	Aug-06-2012	SKW-5DINT (MTT2)									
Intelligent Transportation System (ITS)															
ITS-PROJ-005	ITS Planning	190	43	Nov-29-2012	Aug-28-2013	SKW-5DINT (MTT2)									
ITS-PROJ-010	ITS Erosion Control Permits	190	43	Nov-29-2012	Aug-28-2013	SKW-5DINT (MTT2)									
VDOT ITS Ductbank and Cable Re-Routing															
ITS-VDOT-005	Replace VDOT ITS - Install ductbank & handholes	65	43	Aug-29-2013	Dec-02-2013	SKW-5DOUT (MTT2)									
ITS-VDOT-010	Replace VDOT ITS - Rough-in exposed conduit	33	75	Aug-29-2013	Oct-15-2013	SKW-5DOUT (MTT2)									
ITS-VDOT-015	Replace VDOT ITS - Install cable and equipment	80	58	Dec-03-2013	Mar-27-2014	SKW-5DOUT (MTT2)									
East of Downtown Tunnels															
ITS-DTTE-005	East of DTT - Install ductbank, foundations & handholes	57	43	Dec-03-2013	Feb-24-2014	SKW-5DOUT (MTT2)									
ITS-DTTE-010	East of DTT - Rough-in exposed conduit	95	43	Dec-03-2013	Apr-17-2014	SKW-5DOUT (MTT2)									
ITS-DTTE-015	East of DTT - Install signs and supports	108	188	Feb-25-2014	Jul-28-2014	SKW-5DOUT (MTT2)									
ITS-DTTE-020	East of DTT - Install devices and cable	90	43	Apr-18-2014	Aug-25-2014	SKW-5DOUT (MTT2)									
Downtown Tunnels															
WDTT-ITS-005	Install ITS devices, conduit & cable - Existing WB DTT	140	73	Sep-16-2013	Apr-04-2014	SKW-LCLOSE (DTT)									
EDTT-ITS-005	Install ITS devices, conduit & cable - Existing EB DTT	140	72	Feb-23-2015	Sep-09-2015	SKW-LCLOSE (DTT)									
West of DTT to New MLK															
ITS-DTTW-005	Existing DTT to New MLK - Install ductbank, foundations & handholes	105	66	Feb-25-2014	Jul-23-2014	SKW-5DOUT (MTT2)									
ITS-DTTW-010	Existing DTT to New MLK - Rough-in exposed conduit	67	66	Apr-18-2014	Jul-23-2014	SKW-5DOUT (MTT2)									
ITS-DTTW-015	Existing DTT to New MLK - Install signs and supports	130	188	Jul-29-2014	Feb-02-2015	SKW-5DOUT (MTT2)									
ITS-DTTW-020	Existing DTT to New MLK - Install devices and cable	125	43	Aug-26-2014	Feb-24-2015	SKW-5DOUT (MTT2)									
MLK Expressway Extension															
MLK-ITS-005	MLK - Rough-in exposed conduit	107	77	Jul-24-2014	Dec-24-2014	SKW-5DOUT (MTT2)									
MLK-ITS-010	MLK - Install ductbank, foundations & handholes	54	101	Jul-24-2014	Oct-08-2014	SKW-5DOUT (MTT2)									
MLK-ITS-015	MLK - Install signs and supports	43	188	Feb-03-2015	Apr-03-2015	SKW-5DOUT (MTT2)									
MLK-ITS-020	MLK - Install devices and cable	95	43	Feb-25-2015	Jul-09-2015	SKW-5DOUT (MTT2)									
MLK to West of Midtown Tunnels															
ITS-MTTW-005	Existing MLK to West of MTT - Rough-in exposed conduit	114	77	Jul-24-2014	Jan-06-2015	SKW-5DOUT (MTT2)									
ITS-MTTW-010	Existing MLK to West of MTT - Install ductbank, foundations & handholes	202	101	Jul-24-2014	May-11-2015	SKW-5DOUT (MTT2)									
ITS-MTTW-015	Existing MLK to West of MTT - Install signs and supports	227	188	Feb-03-2015	Dec-24-2015	SKW-5DOUT (MTT2)									
ITS-MTTW-020	Existing MLK to West of MTT - Install devices and cable	212	43	Feb-25-2015	Dec-24-2015	SKW-5DOUT (MTT2)									
Existing Midtown Tunnel															
ITS-MTT1-005	Install ITS devices, conduit & cable - Existing MTT	140	1	Feb-06-2017	Aug-23-2017	SKW-LCLOSE (MTT1)									
New Midtown Tunnel															
MTT2-ITS-005	Install ITS devices, conduit & cable - New Midtown Tunnel	67	33	Feb-02-2016	May-05-2016	SKW-5DINT (MTT2)									
East of Midtown Tunnels															
		228	188	May-12-2015	Apr-05-2016	SKW-5DOUT (MTT2)									

